

## PLIN3 RABBIT PAB

**Cat.#:** S217910

**Product Name:** Anti-PLIN3 Rabbit Polyclonal Antibody

**Synonyms:** PPI7; TIP47; M6PRBP1

**UNIPROT ID:** O60664 (Gene Accession - BC005818 )

**Background:** Mannose 6-phosphate receptors (MPRs) deliver lysosomal hydrolase from the Golgi to endosomes and then return to the Golgi complex. The protein encoded by this gene interacts with the cytoplasmic domains of both cation-independent and cation-dependent MPRs, and is required for endosome-to-Golgi transport.

**Immunogen:** Fusion protein of human PLIN3

**Applications:** ELISA, WB, IHC

**Recommended Dilutions:** IHC: 25-100;WB: 500-2000;ELISA: 2000-5000

**Host Species:** Rabbit

**Clonality:** Rabbit Polyclonal

**Isotype:** Immunogen-specific rabbit IgG

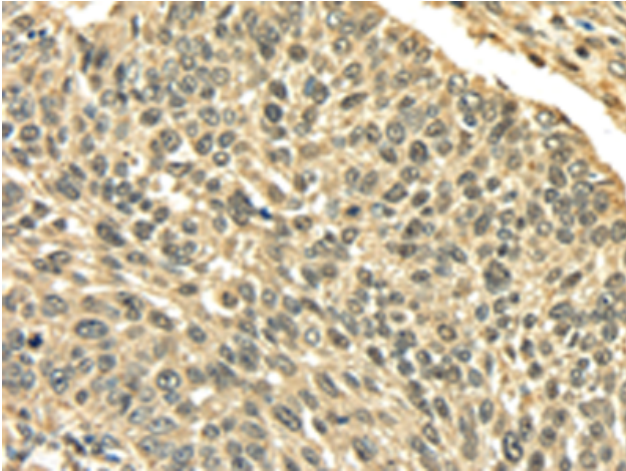
**Purification:** Antigen affinity purification

**Species Reactivity:** Human

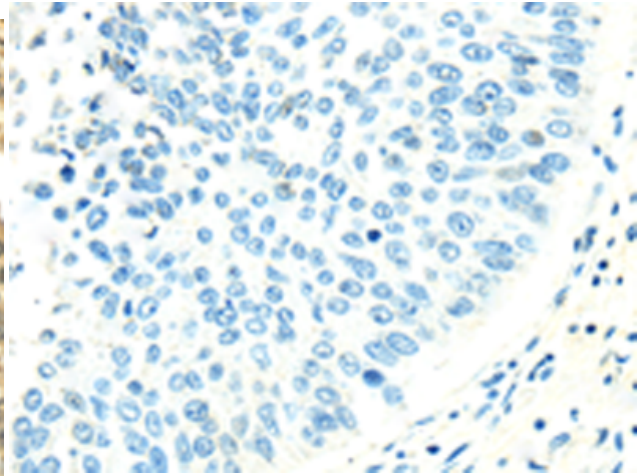
**Constituents:** PBS (without Mg<sup>2+</sup> and Ca<sup>2+</sup>), pH 7.4, 150 mM NaCl, 0.05% Sodium Azide and 40% glycerol

**Research Areas:** Signal Transduction

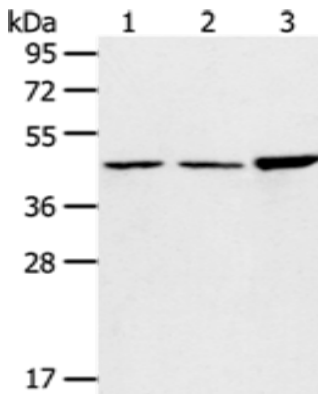
**Storage & Shipping:** Store at -20°C. Avoid repeated freezing and thawing



Immunohistochemistry analysis of paraffin embedded Human lung cancer tissue using 217910 (PLIN3 Antibody) at a dilution of 1/35 (Cytoplasm and Nucleus).



In comparison with the IHC on the left, the same paraffin-embedded Human lung cancer tissue is first treated with the fusion protein and then with 217910 (Anti-PLIN3 Antibody) at dilution 1/35.



Gel: 8% SDS-PAGE, Lysate: 40  $\mu$ g;  
Lane 1-3: 293T cells, 231 cells, Hela cells;  
Primary antibody: 217910 (PLIN3 Antibody) at dilution 1/800;  
Secondary antibody: Goat anti rabbit IgG at 1/8000 dilution;  
Exposure time: 3 seconds