

PLIN4 RABBIT PAB

Cat.#: S222305

Product Name: Anti-PLIN4 Rabbit Polyclonal Antibody

Synonyms: S3-12; KIAA1881

UNIPROT ID: Q96Q06 (Gene Accession - NP_001073869)

Background: Members of the perilipin family, such as PLIN4, coat intracellular lipid storage droplets (Wolins et al., 2003 [PubMed 12840023]). May play a role in triacylglycerol packaging into adipocytes. May function as a coat protein involved in the biogenesis of lipid droplets (By similarity).

Immunogen: Synthetic peptide of human PLIN4

Applications: ELISA, IHC

Recommended Dilutions: IHC: 25-50; ELISA: 5000-10000

Host Species: Rabbit

Clonality: Rabbit Polyclonal

Isotype: Immunogen-specific rabbit IgG

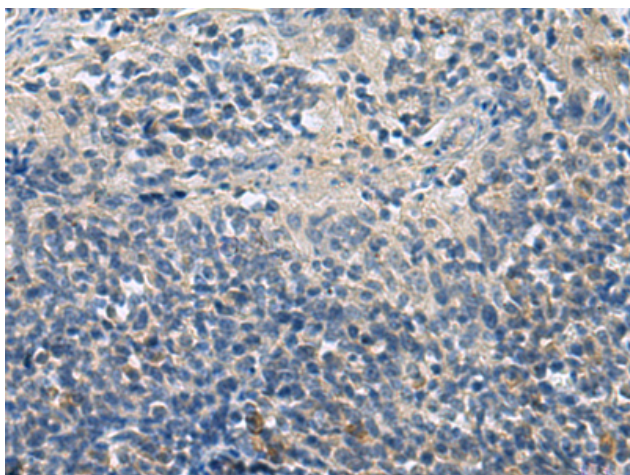
Purification: Antigen affinity purification

Species Reactivity: Human

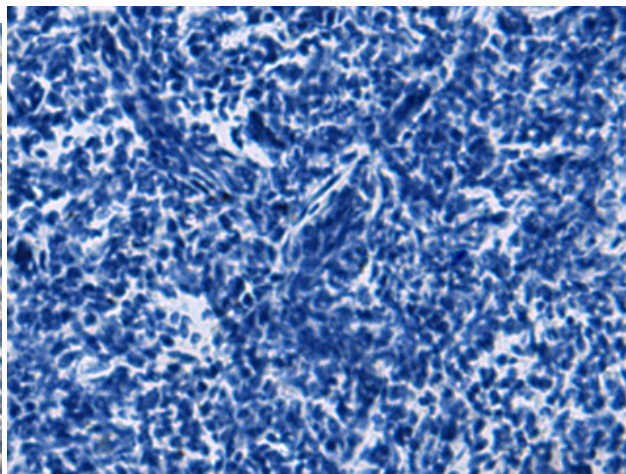
Constituents: PBS (without Mg²⁺ and Ca²⁺), pH 7.4, 150 mM NaCl, 0.05% Sodium Azide and 40% glycerol

Research Areas: Metabolism, Cardiovascular

Storage & Shipping: Store at -20°C. Avoid repeated freezing and thawing



Immunohistochemistry analysis of paraffin embedded Human tonsil tissue using 222305 (PLIN4 Antibody) at a dilution of 1/20 (Cell membrane).



In comparison with the IHC on the left, the same paraffin-embedded Human tonsil tissue is first treated with the synthetic peptide and then with 222305 (Anti-PLIN4 Antibody) at dilution 1/20.