

## PLK4 RABBIT PAB

**Cat.#:** S217699

**Product Name:** Anti-PLK4 Rabbit Polyclonal Antibody

**Synonyms:** SAK; STK18; MCCRP2

**UNIPROT ID:** O00444 (Gene Accession - BC036023 )

**Background:** This gene encodes a member of the polo family of serine/threonine protein kinases. The protein localizes to centrioles, complex microtubule-based structures found in centrosomes, and regulates centriole duplication during the cell cycle. Three alternatively spliced transcript variants that encode different protein isoforms have been found for this gene.

**Immunogen:** Fusion protein of human PLK4

**Applications:** ELISA, IHC

**Recommended Dilutions:** IHC: 35-200; ELISA: 5000-10000

**Host Species:** Rabbit

**Clonality:** Rabbit Polyclonal

**Isotype:** Immunogen-specific rabbit IgG

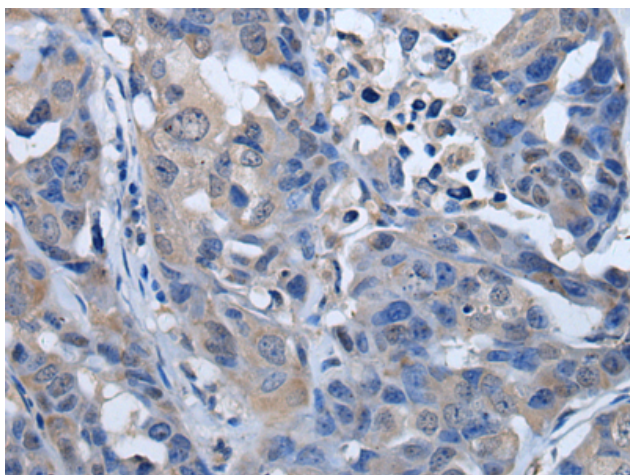
**Purification:** Antigen affinity purification

**Species Reactivity:** Human, Mouse, Rat

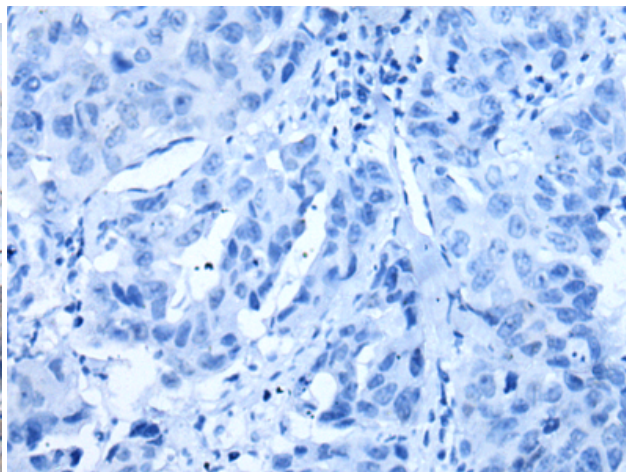
**Constituents:** PBS (without Mg<sup>2+</sup> and Ca<sup>2+</sup>), pH 7.4, 150 mM NaCl, 0.05% Sodium Azide and 40% glycerol

**Research Areas:** Epigenetics and Nuclear Signaling, Cancer

**Storage & Shipping:** Store at -20°C. Avoid repeated freezing and thawing



Immunohistochemistry analysis of paraffin embedded Human breast cancer tissue using 217699(PLK4 Antibody) at a dilution of 1/50(Cytoplasm ).



In comparison with the IHC on the left, the same paraffin-embedded Human breast cancer tissue is first treated with the fusion protein and then with 217699(Anti-PLK4 Antibody) at dilution 1/50.