

PLL P RABBIT PAB

Cat.#: S219527

Product Name: Anti-PLL Rabbit Polyclonal Antibody

Synonyms: PMLP; TM4SF11

UNIPROT ID: Q9Y342 (Gene Accession - BC002760)

Background: Appears to be involved in myelination. Could also participate in ion transport events as addition of plasmolipin to lipid bilayers induces the formation of ion channels, which are voltage-dependent and K⁺-selective (By similarity).

Immunogen: Fusion protein of human PLLP

Applications: ELISA, IHC

Recommended Dilutions: IHC: 50-100; ELISA: 5000-10000

Host Species: Rabbit

Clonality: Rabbit Polyclonal

Isotype: Immunogen-specific rabbit IgG

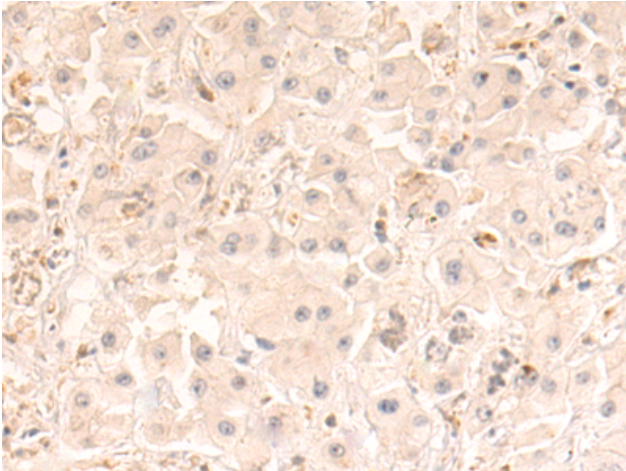
Purification: Antigen affinity purification

Species Reactivity: Human, Mouse, Rat

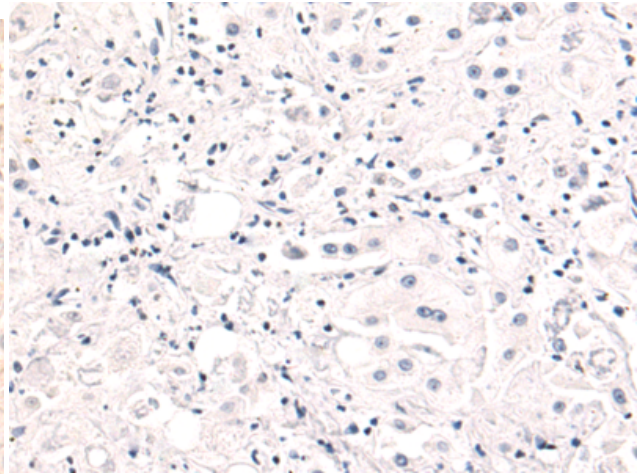
Constituents: PBS (without Mg²⁺ and Ca²⁺), pH 7.4, 150 mM NaCl, 0.05% Sodium Azide and 40% glycerol

Research Areas: Neuroscience

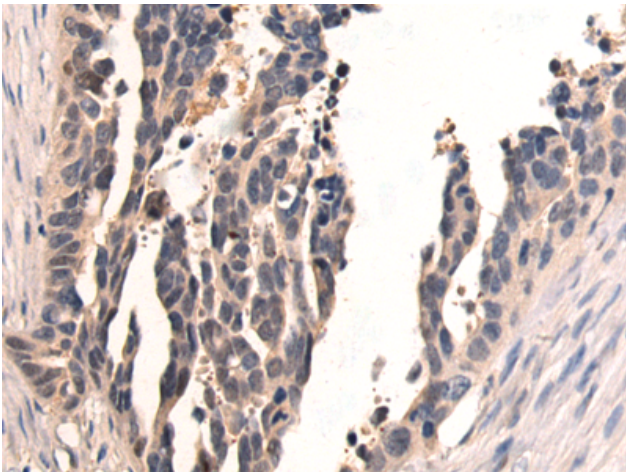
Storage & Shipping: Store at -20°C. Avoid repeated freezing and thawing



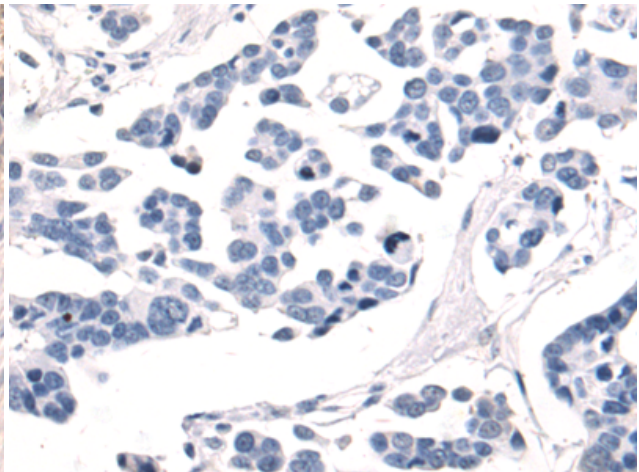
Immunohistochemistry analysis of paraffin embedded Human liver cancer tissue using 219527(PLLP Antibody) at a dilution of 1/70(Cytoplasm).



In comparison with the IHC on the left, the same paraffin-embedded Human liver cancer tissue is first treated with the fusion protein and then with 219527(Anti-PLLP Antibody) at dilution 1/70.



The image on the left is immunohistochemistry of paraffin-embedded Human colorectal cancer tissue using 219527(Anti-PLLP Antibody) at a dilution of 1/70.



In comparison with the IHC on the left, the same paraffin-embedded Human colorectal cancer tissue is first treated with fusion protein and then with D227517(Anti-PLLP Antibody) at dilution 1/70.