

PLTP RABBIT PAB

Cat.#: S217701

Product Name: Anti-PLTP Rabbit Polyclonal Antibody

Synonyms: BPIFE; HDLCQ9

UNIPROT ID: P55058 (Gene Accession - BC019847)

Background: The protein encoded by this gene is one of at least two lipid transfer proteins found in human plasma. The encoded protein transfers phospholipids from triglyceride-rich lipoproteins to high density lipoprotein (HDL). In addition to regulating the size of HDL particles, this protein may be involved in cholesterol metabolism. At least two transcript variants encoding different isoforms have been found for this gene.

Immunogen: Fusion protein of human PLTP

Applications: ELISA, WB, IHC

Recommended Dilutions: IHC: 100-200;WB: 500-2000;ELISA: 5000-10000

Host Species: Rabbit

Clonality: Rabbit Polyclonal

Isotype: Immunogen-specific rabbit IgG

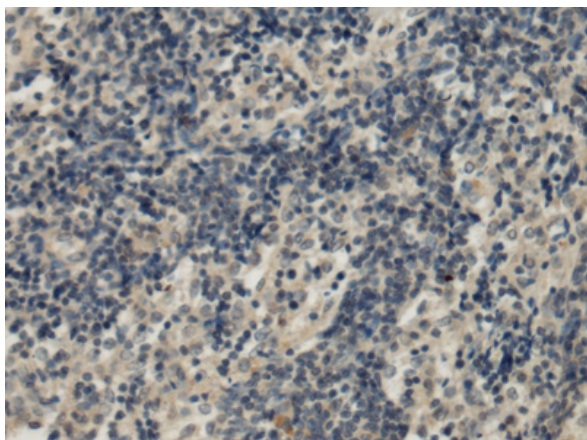
Purification: Antigen affinity purification

Species Reactivity: Human, Mouse

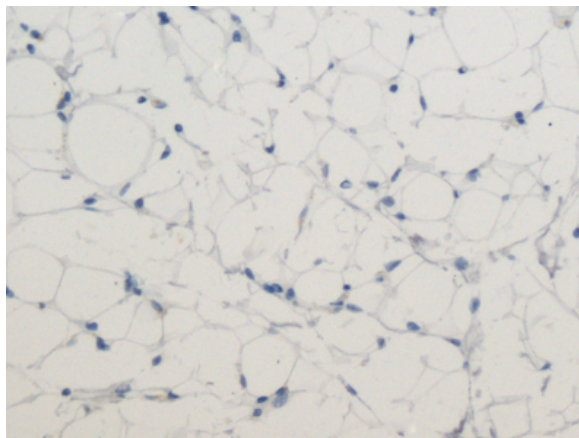
Constituents: PBS (without Mg²⁺ and Ca²⁺), pH 7.4, 150 mM NaCl, 0.05% Sodium Azide and 40% glycerol

Research Areas: Metabolism, Cancer, Cardiovascular

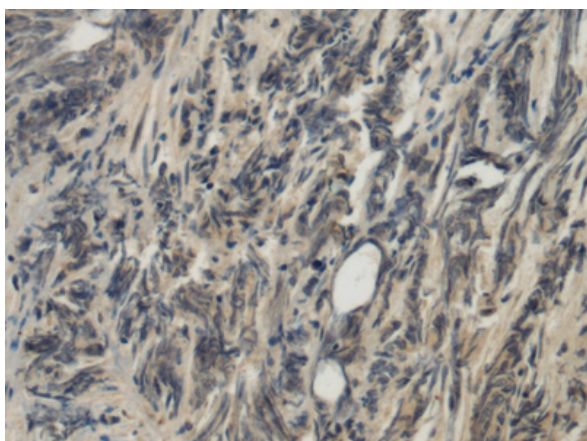
Storage & Shipping: Store at -20°C. Avoid repeated freezing and thawing



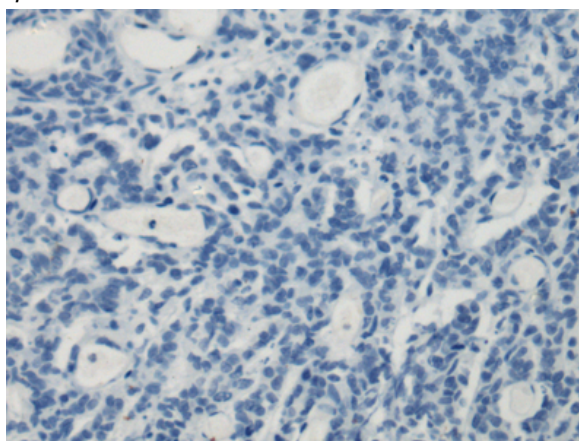
Immunohistochemistry analysis of paraffin embedded Human esophagus cancer tissue using 217701(PLTP Antibody) at a dilution of 1/100(Cytoplasm).



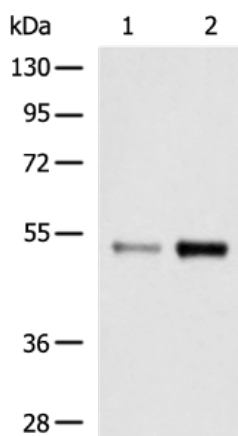
In comparison with the IHC on the left, the same paraffin-embedded Human esophagus cancer tissue is first treated with the fusion protein and then with 217701(Anti-PLTP Antibody) at dilution 1/100.



The image on the left is immunohistochemistry of paraffin-embedded Human prostate cancer tissue using 217701(Anti-PLTP Antibody) at a dilution of 1/100.



In comparison with the IHC on the left, the same paraffin-embedded Human prostate cancer tissue is first treated with fusion protein and then with D222892(Anti-PLTP Antibody) at dilution 1/100.



Gel: 8%SDS-PAGE, Lysate: 40 µg;
Lane 1-2: K562 and 293T cell lysates;
Primary antibody: 217701(PLTP Antibody) at dilution 1/800;
Secondary antibody: HRP-conjugated Goat anti rabbit IgG at 1/5000 dilution;
Exposure time: 5 minutes



Product Description

Pioneering GTPase and Oncogene Product Development since 2010
