

PLXNA1 RABBIT PAB

Cat.#: S220816

Product Name: Anti-PLXNA1 Rabbit Polyclonal Antibody

Synonyms: NOV; NOV; PLXN1; PLEXIN-A1

UNIPROT ID: Q9UIW2 (Gene Accession - NP_115618)

Background: Plexins are a family of large, transmembrane receptors for multiple classes of semaphorins in vertebrates. Plexins are widely expressed, and regions of their extracellular domain are homologous to both scatter factor receptors and semaphorin domains.

Immunogen: Synthetic peptide of human PLXNA1

Applications: ELISA, IHC

Recommended Dilutions: IHC: 50-200; ELISA: 2000-5000

Host Species: Rabbit

Clonality: Rabbit Polyclonal

Isotype: Immunogen-specific rabbit IgG

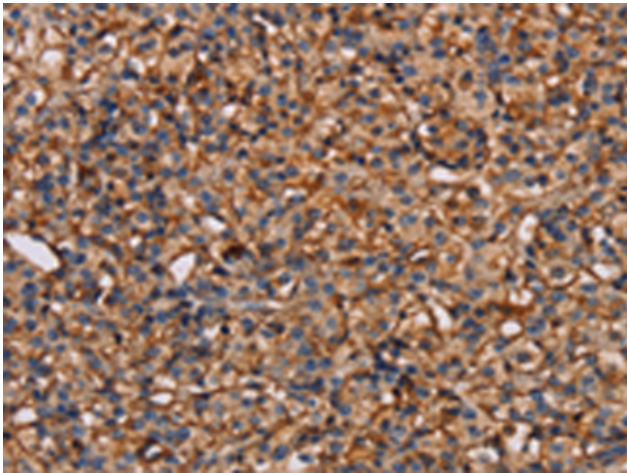
Purification: Antigen affinity purification

Species Reactivity: Human, Mouse

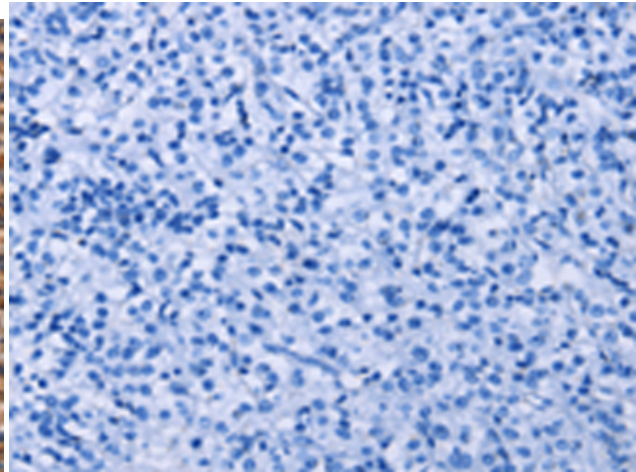
Constituents: PBS (without Mg²⁺ and Ca²⁺), pH 7.4, 150 mM NaCl, 0.05% Sodium Azide and 40% glycerol

Research Areas: Neuroscience

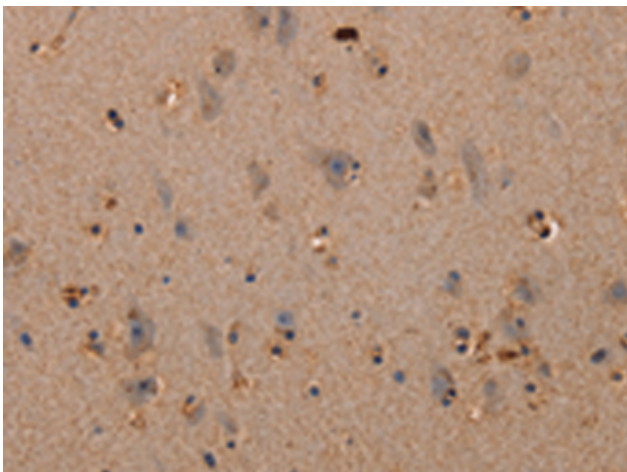
Storage & Shipping: Store at -20°C. Avoid repeated freezing and thawing



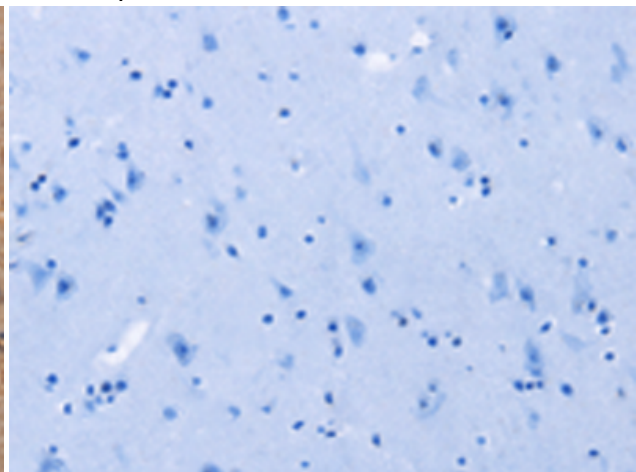
Immunohistochemistry analysis of paraffin embedded Human prostate cancer tissue using 220816(PLXNA1 Antibody) at a dilution of 1/30(Cytoplasm).



In comparison with the IHC on the left, the same paraffin-embedded Human prostate cancer tissue is first treated with the synthetic peptide and then with 220816(Anti-PLXNA1 Antibody) at dilution 1/30.



The image on the left is immunohistochemistry of paraffin-embedded Human brain tissue using 220816(Anti-PLXNA1 Antibody) at a dilution of 1/30.



In comparison with the IHC on the left, the same paraffin-embedded Human brain tissue is first treated with synthetic peptide and then with D262060(Anti-PLXNA1 Antibody) at dilution 1/30.