

PLXNB1 RABBIT PAB

Cat.#: S220820

Product Name: Anti-PLXNB1 Rabbit Polyclonal Antibody

Synonyms: SEP; PLXN5; PLEXIN-B1

UNIPROT ID: O43157 (Gene Accession - NP_001123554)

Background: Plexin B1 is a protein of the plexin family that in humans is encoded by the PLXNB1 gene. Receptor for SEMA4D. Plays a role in RHOA activation and subsequent changes of the actin cytoskeleton. Plays a role in axon guidance, invasive growth and cell migration.

Immunogen: Synthetic peptide of human PLXNB1

Applications: ELISA, IHC

Recommended Dilutions: IHC: 50-200; ELISA: 2000-5000

Host Species: Rabbit

Clonality: Rabbit Polyclonal

Isotype: Immunogen-specific rabbit IgG

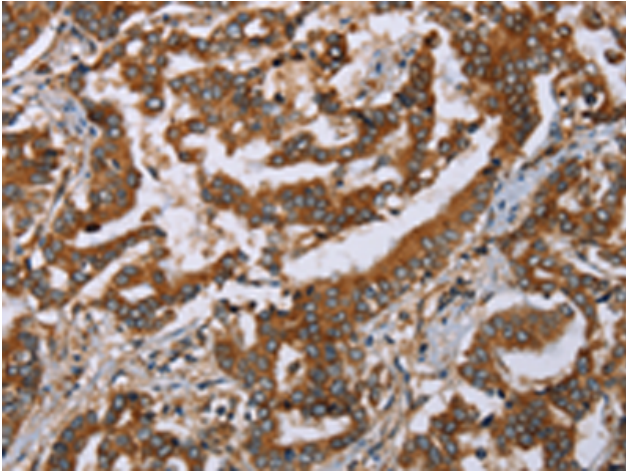
Purification: Antigen affinity purification

Species Reactivity: Human, Mouse

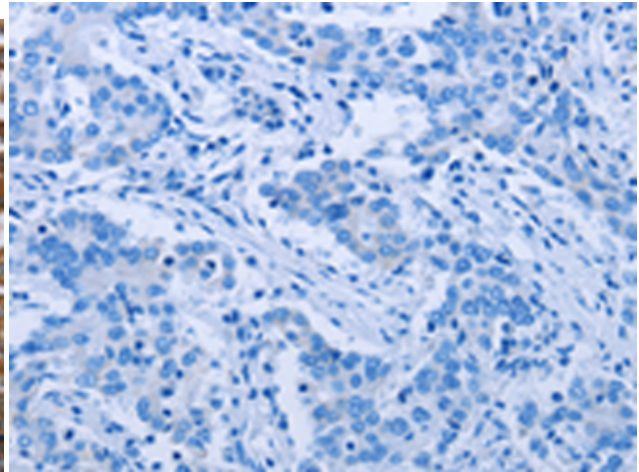
Constituents: PBS (without Mg²⁺ and Ca²⁺), pH 7.4, 150 mM NaCl, 0.05% Sodium Azide and 40% glycerol

Research Areas: Neuroscience

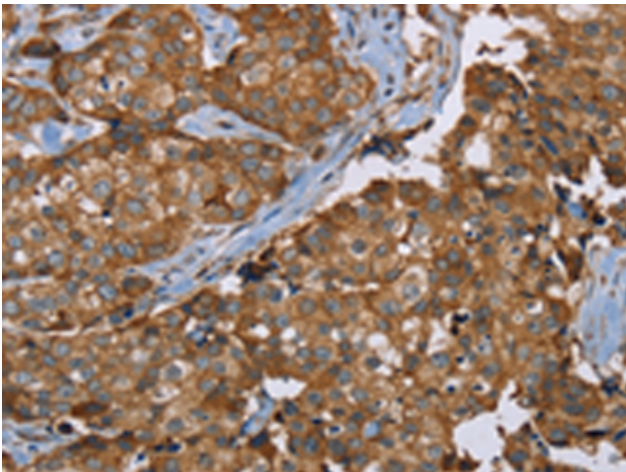
Storage & Shipping: Store at -20°C. Avoid repeated freezing and thawing



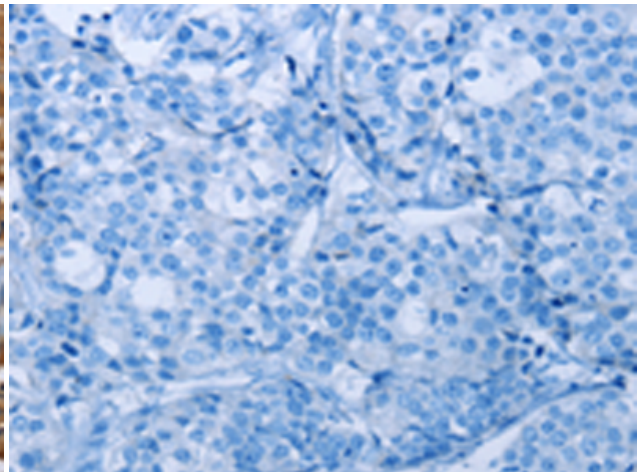
Immunohistochemistry analysis of paraffin embedded Human liver cancer tissue using 220820 (PLXNB1 Antibody) at a dilution of 1/50 (Cytoplasm).



In comparison with the IHC on the left, the same paraffin-embedded Human liver cancer tissue is first treated with the synthetic peptide and then with 220820 (Anti-PLXNB1 Antibody) at dilution 1/50.



The image on the left is immunohistochemistry of paraffin-embedded Human breast cancer tissue using 220820 (Anti-PLXNB1 Antibody) at a dilution of 1/50.



In comparison with the IHC on the left, the same paraffin-embedded Human breast cancer tissue is first treated with synthetic peptide and then with D262064 (Anti-PLXNB1 Antibody) at dilution 1/50.