

PLXNB2 RABBIT PAB

Cat.#: S220821

Product Name: Anti-PLXNB2 Rabbit Polyclonal Antibody

Synonyms: MMI; PLEXB2; Nbla00445; dJ402G11.3

UNIPROT ID: O15031 (Gene Accession - NP_036533)

Background: Members of the B class of plexins, such as PLXNB2 are transmembrane receptors that participate in axon guidance and cell migration in response to semaphorins (Perrot et al. (2002) [PubMed 12183458]).

Immunogen: Synthetic peptide of human PLXNB2

Applications: ELISA, IHC

Recommended Dilutions: IHC: 25-100; ELISA: 2000-5000

Host Species: Rabbit

Clonality: Rabbit Polyclonal

Isotype: Immunogen-specific rabbit IgG

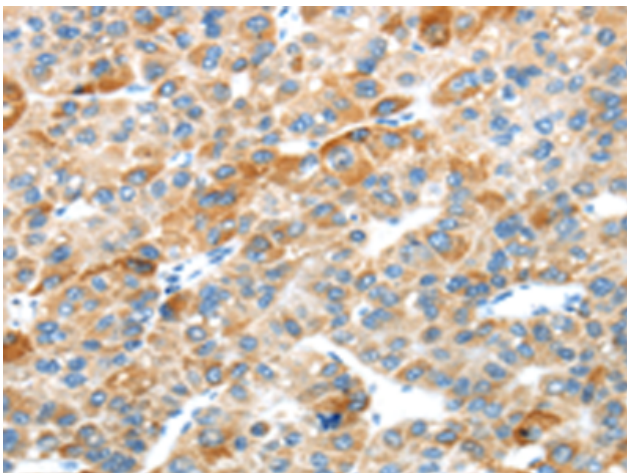
Purification: Antigen affinity purification

Species Reactivity: Human, Mouse

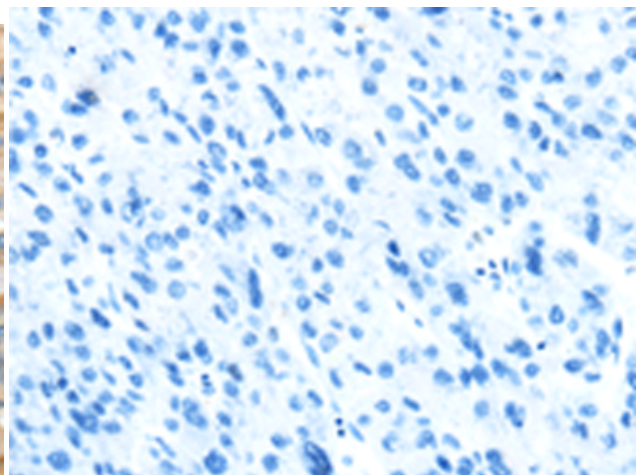
Constituents: PBS (without Mg²⁺ and Ca²⁺), pH 7.4, 150 mM NaCl, 0.05% Sodium Azide and 40% glycerol

Research Areas: Neuroscience

Storage & Shipping: Store at -20°C. Avoid repeated freezing and thawing



Immunohistochemistry analysis of paraffin embedded Human liver cancer tissue using 220821(PLXNB2 Antibody) at a dilution of 1/20(Cell membrane).



In comparison with the IHC on the left, the same paraffin-embedded Human liver cancer tissue is first treated with the synthetic peptide and then with 220821(Anti-PLXNB2 Antibody) at dilution 1/20.