

PMF 1 RABBIT MAB

Cat.#: N263497

Product Name: Anti-PMF 1 Rabbit Monoclonal Antibody

Synonyms: Polyamine-modulated factor 1

UNIPROT ID: Q6PIK2

Background: Part of the MIS12 complex which is required for normal chromosome alignment and segregation and kinetochore formation during mitosis.

Immunogen: Recombinant protein of human PMF-1

Applications: WB,IP

Recommended Dilutions: WB: 1/500-1/1000 IP: 1/20

Host Species: Rabbit

Clonality: Rabbit Monoclonal

Clone ID: R07-1G3

MW: Calculated MW: 23 kDa; Observed MW: 23 kDa

Isotype: IgG

Purification: Affinity Purified

Species Reactivity: Human,Mouse,Rat

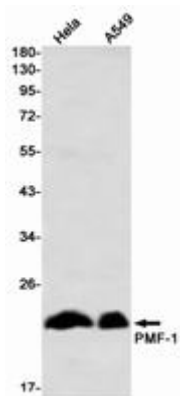
Conjugation: Unconjugated

Modification: Unmodified

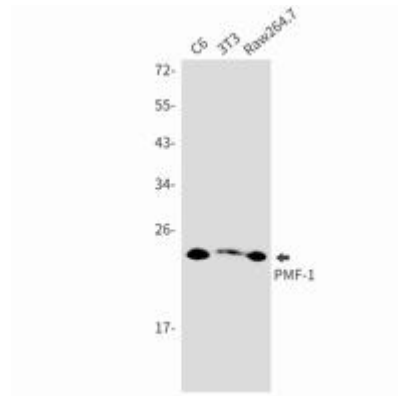
Constituents: PBS (without Mg²⁺ and Ca²⁺), pH 7.3 containing 50% glycerol, 0.5% BSA and 0.02% sodium azide

Research Areas: -

Storage & Shipping: Store at -20°C. Avoid repeated freezing and thawing



Western blot analysis of PMF1 in HeLa, A549 lysates using PMF1 antibody.



Western blot analysis of PMF1 in C6, 3T3, Raw264.7 lysates using PMF 1 antibody.