

PMS2 RABBIT MAB

Cat.#: N261646

Product Name: Anti-PMS2 Rabbit Monoclonal Antibody

Synonyms: DNA mismatch repair gene; DNA mismatch repair protein PMS2; HNPCC4; PMS1 protein homolog 2

UNIPROT ID: P54278

Background: Assembly of the MutL-MutS-heteroduplex ternary complex in presence of RFC and PCNA is sufficient to activate endonuclease activity of PMS2. It introduces single-strand breaks near the mismatch and thus generates new entry points for the exonuclease EXO1 to degrade the strand containing the mismatch. DNA methylation would prevent cleavage and therefore assure that only the newly mutated DNA strand is going to be corrected.

Immunogen: A synthetic peptide of human PMS2

Applications: WB,IP

Recommended Dilutions: WB: 1/500-1/1000 IP: 1/20

Host Species: Rabbit

Clonality: Rabbit Monoclonal

Clone ID: R06-5G3

MW: Calculated MW: 96 kDa; Observed MW: 96 kDa

Isotype: IgG

Purification: Affinity Purified

Species Reactivity: Human

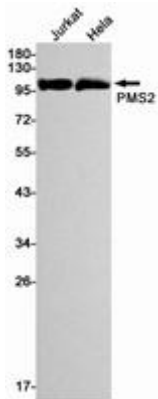
Conjugation: Unconjugated

Modification: Unmodified

Constituents: PBS (without Mg²⁺ and Ca²⁺), pH 7.3 containing 50% glycerol, 0.5% BSA and 0.02% sodium azide

Research Areas: Epigenetics and Nuclear Signaling

Storage & Shipping: Store at -20°C. Avoid repeated freezing and thawing



Western blot analysis of PMS2 in Jurkat, HeLa lysates using PMS2 antibody.