

PNCK RABBIT PAB

Cat.#: S222356

Product Name: Anti-PNCK Rabbit Polyclonal Antibody

Synonyms: BSTK3; CaMK1b

UNIPROT ID: Q6P2M8 (Gene Accession - XP_006724872)

Background: PNCK is a member of the calcium/calmodulin-dependent protein kinase family of protein serine/threonine kinases.

Immunogen: Synthetic peptide of human PNCK

Applications: ELISA, IHC

Recommended Dilutions: IHC: 100-300; ELISA: 5000-10000

Host Species: Rabbit

Clonality: Rabbit Polyclonal

Isotype: Immunogen-specific rabbit IgG

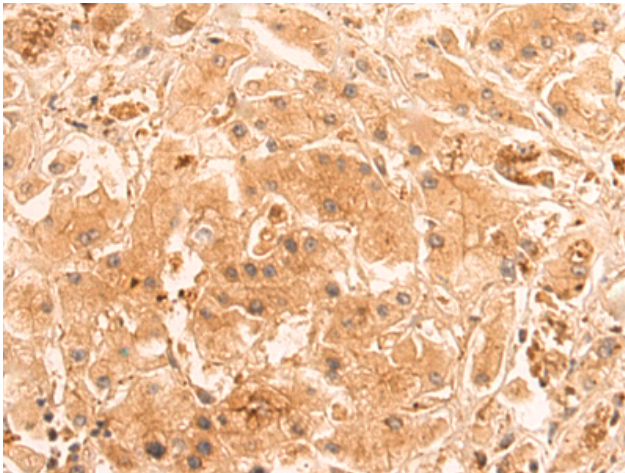
Purification: Antigen affinity purification

Species Reactivity: Human, Mouse, Rat

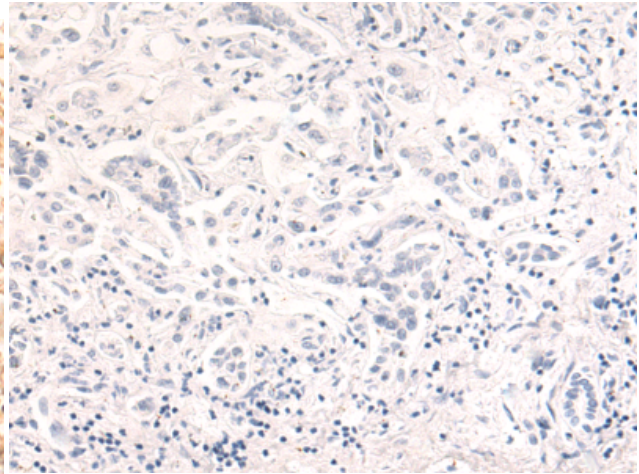
Constituents: PBS (without Mg²⁺ and Ca²⁺), pH 7.4, 150 mM NaCl, 0.05% Sodium Azide and 40% glycerol

Research Areas: Neuroscience, Signal Transduction

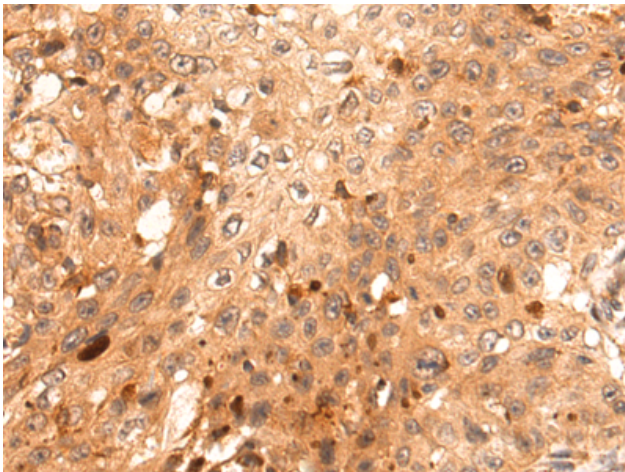
Storage & Shipping: Store at -20°C. Avoid repeated freezing and thawing



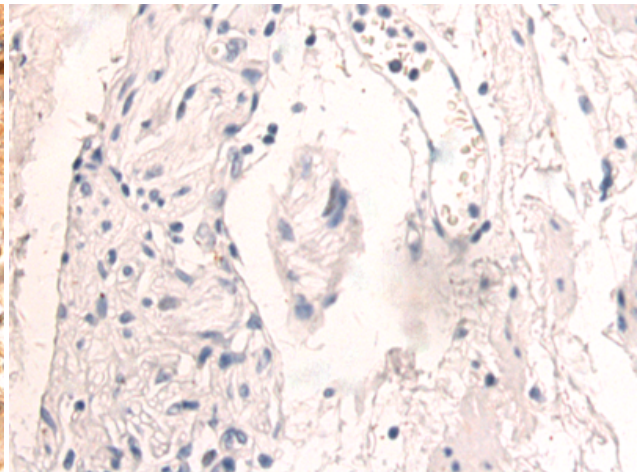
Immunohistochemistry analysis of paraffin embedded Human liver cancer tissue using 222356 (PNCK Antibody) at a dilution of 1/75 (Cytoplasm and Nucleus).



In comparison with the IHC on the left, the same paraffin-embedded Human liver cancer tissue is first treated with the synthetic peptide and then with 222356 (Anti-PNCK Antibody) at dilution 1/75.



The image on the left is immunohistochemistry of paraffin-embedded Human esophagus cancer tissue using 222356 (Anti-PNCK Antibody) at a dilution of 1/75.



In comparison with the IHC on the left, the same paraffin-embedded Human esophagus cancer tissue is first treated with synthetic peptide and then with D264467 (Anti-PNCK Antibody) at dilution 1/75.