

PNLIPRP1 RABBIT PAB

Cat.#: S217700

Product Name: Anti-PNLIPRP1 Rabbit Polyclonal Antibody

Synonyms: PLRP1

UNIPROT ID: P54315 (Gene Accession - BC025784)

Background: May function as inhibitor of dietary triglyceride digestion. Lacks detectable lipase activity towards triglycerides, diglycerides, phosphatidylcholine, galactolipids or cholesterol esters (in vitro) (By similarity).

Immunogen: Fusion protein of human PNLIPRP1

Applications: ELISA, WB, IHC

Recommended Dilutions: IHC: 25-100;WB: 200-1000;ELISA: 5000-10000

Host Species: Rabbit

Clonality: Rabbit Polyclonal

Isotype: Immunogen-specific rabbit IgG

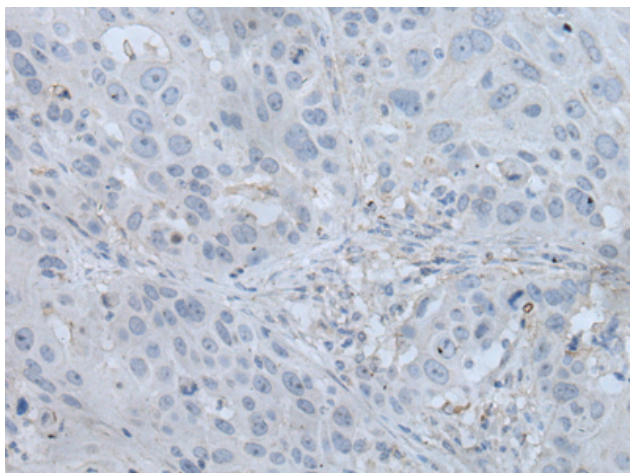
Purification: Antigen affinity purification

Species Reactivity: Human, Mouse, Rat

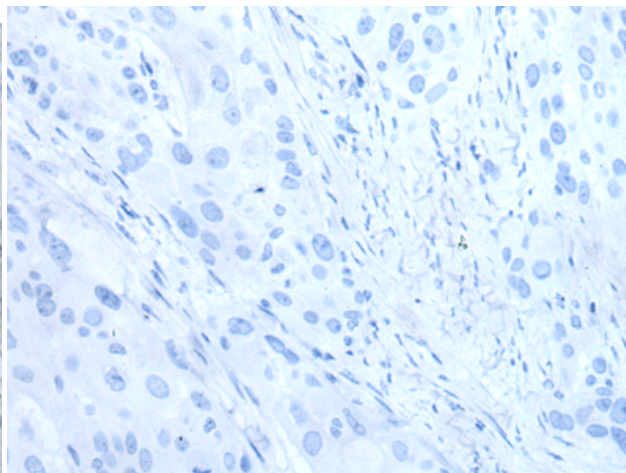
Constituents: PBS (without Mg²⁺ and Ca²⁺), pH 7.4, 150 mM NaCl, 0.05% Sodium Azide and 40% glycerol

Research Areas: Metabolism

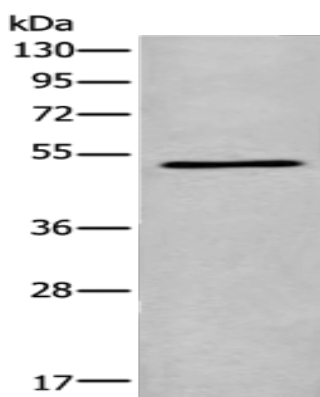
Storage & Shipping: Store at -20°C. Avoid repeated freezing and thawing



Immunohistochemistry analysis of paraffin embedded Human esophagus cancer tissue using 217700(PNLIPRP1 Antibody) at a dilution of 1/35(Secreted).



In comparison with the IHC on the left, the same paraffin-embedded Human esophagus cancer tissue is first treated with the fusion protein and then with 217700(Anti-PNLIPRP1 Antibody) at dilution 1/35.



Gel: 8%SDS-PAGE, Lysate: 40 μ g;
Lane: Mouse Pancreas tissue lysate;
Primary antibody: 217700(PNLIPRP1 Antibody) at dilution 1/300;
Secondary antibody: Goat anti rabbit IgG at 1/8000 dilution;
Exposure time: 10 seconds