

PNPT1 RABBIT PAB

Cat.#: S220825

Product Name: Anti-PNPT1 Rabbit Polyclonal Antibody

Synonyms: OLD35; DFNB70; PNPASE; old-35; COXPD13

UNIPROT ID: Q8TCS8 (Gene Accession - NP_149100)

Background: The protein encoded by this gene belongs to the evolutionary conserved polynucleotide phosphorylase family comprised of phosphate dependent 3'-to-5' exoribonucleases implicated in RNA processing and degradation. This enzyme is predominantly localized in the mitochondrial intermembrane space and is involved in import of RNA to mitochondria. Mutations in this gene have been associated with combined oxidative phosphorylation deficiency-13 and autosomal recessive nonsyndromic deafness-70. Related pseudogenes are found on chromosomes 3 and 7.

Immunogen: Synthetic peptide of human PNPT1

Applications: ELISA, IHC

Recommended Dilutions: IHC: 50-200; ELISA: 2000-5000

Host Species: Rabbit

Clonality: Rabbit Polyclonal

Isotype: Immunogen-specific rabbit IgG

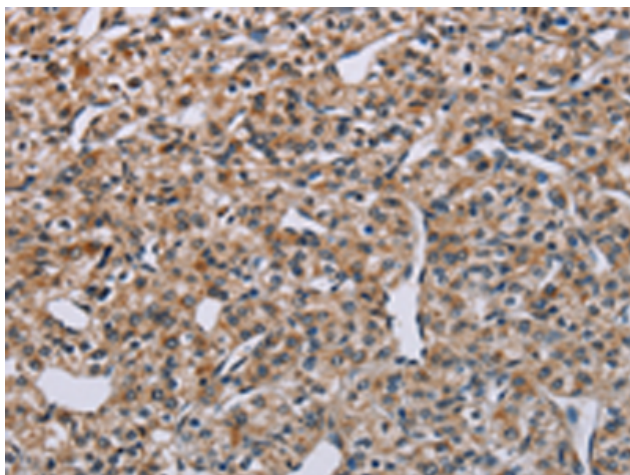
Purification: Antigen affinity purification

Species Reactivity: Human, Mouse

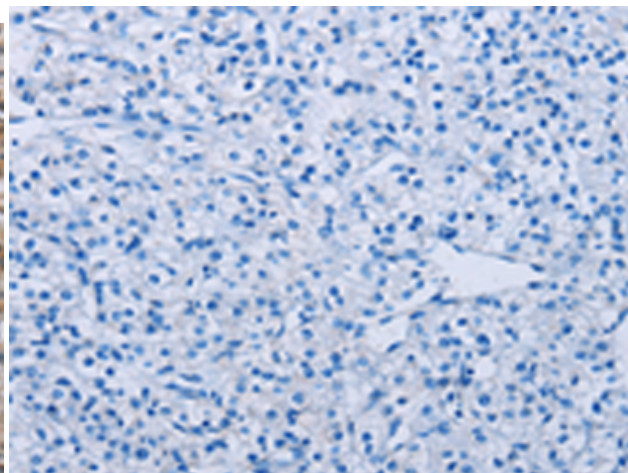
Constituents: PBS (without Mg²⁺ and Ca²⁺), pH 7.4, 150 mM NaCl, 0.05% Sodium Azide and 40% glycerol

Research Areas: Epigenetics and Nuclear Signaling, Cancer, Metabolism, Immunology

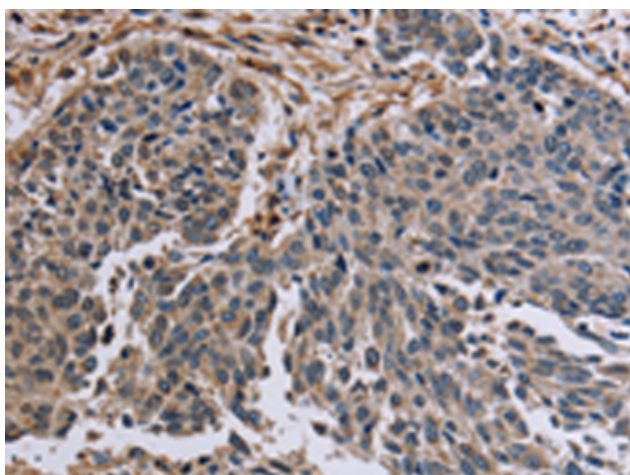
Storage & Shipping: Store at -20°C. Avoid repeated freezing and thawing



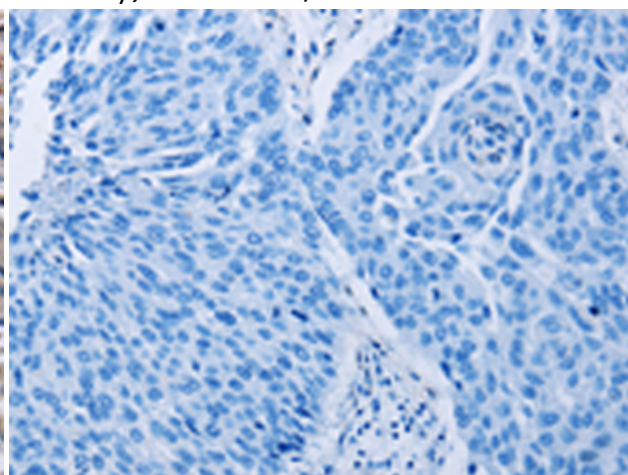
Immunohistochemistry analysis of paraffin embedded Human prostate cancer tissue using 220825 (PNPT1 Antibody) at a dilution of 1/40 (Cytoplasm).



In comparison with the IHC on the left, the same paraffin-embedded Human prostate cancer tissue is first treated with the synthetic peptide and then with 220825 (Anti-PNPT1 Antibody) at dilution 1/40.



The image on the left is immunohistochemistry of paraffin-embedded Human lung cancer tissue using 220825 (Anti-PNPT1 Antibody) at a dilution of 1/40.



In comparison with the IHC on the left, the same paraffin-embedded Human lung cancer tissue is first treated with synthetic peptide and then with D262070 (Anti-PNPT1 Antibody) at dilution 1/40.