

PODOPLANIN RABBIT PAB

Cat.#: N225807

Product Name: Anti-Podoplanin Rabbit pAb

Synonyms: T1A; GP36; GP40; Gp38; OTS8; T1A2; T1A; T1A-2; AGGRUS; HT1A-1; PA2.26

UNIPROT ID: Q86YL7

Background: May be involved in cell migration and/or actin cytoskeleton organization. When expressed in keratinocytes, induces changes in cell morphology with transfected cells showing an elongated shape, numerous membrane protrusions, major reorganization of the actin cytoskeleton, increased motility and decreased cell adhesion. Required for normal lung cell proliferation and alveolus formation at birth. Induces platelet aggregation.

Immunogen: A synthesized peptide derived from human Podoplanin

Applications: WB,IHC-P

Recommended Dilutions: WB: 1/500-1/1000 IHC: 1/50-1/100

Host Species: Rabbit

Clonality: Rabbit Polyclonal

Clone ID: -

MW: Calculated MW: 17 kDa; Observed MW: 36 kDa

Isotype: IgG

Purification: Affinity Chromatography

Species Reactivity: Human

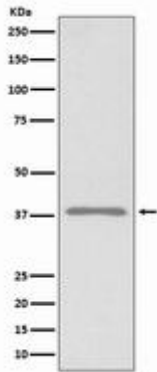
Conjugation: Unconjugated

Modification: Unmodified

Constituents: PBS (without Mg²⁺ and Ca²⁺), pH 7.3 containing 50% glycerol, 0.5% BSA and 0.02% sodium azide

Research Areas: Cardiovascular

Storage & Shipping: Store at -20°C. Avoid repeated freezing and thawing



Western blot analysis of Podoplanin in 293T lysates using Podoplanin antibody.