

POLA1 RABBIT PAB

Cat.#: S214296

Product Name: Anti-POLA1 Rabbit Polyclonal Antibody

Synonyms: NSX; POLA; p180

UNIPROT ID: P09884 (Gene Accession - NP_058633)

Background: This gene encodes the catalytic subunit of DNA polymerase, which together with a regulatory and two primase subunits, forms the DNA polymerase alpha complex. The catalytic subunit plays an essential role in the initiation of DNA replication.

Immunogen: Synthetic peptide of human POLA1

Applications: ELISA, IHC

Recommended Dilutions: IHC: 20-100; ELISA: 5000-10000

Host Species: Rabbit

Clonality: Rabbit Polyclonal

Isotype: Immunogen-specific rabbit IgG

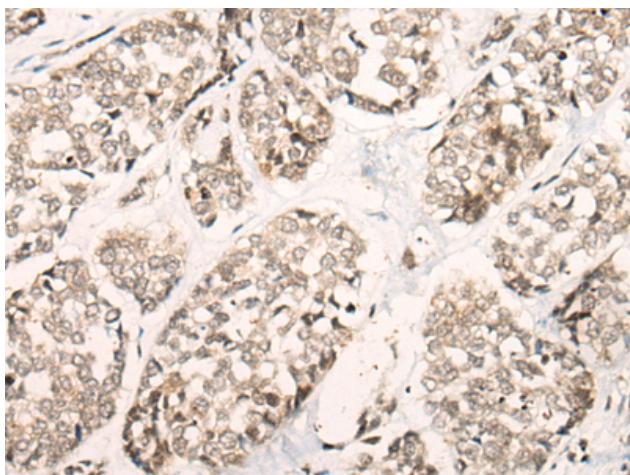
Purification: Antigen affinity purification

Species Reactivity: Human, Mouse, Rat

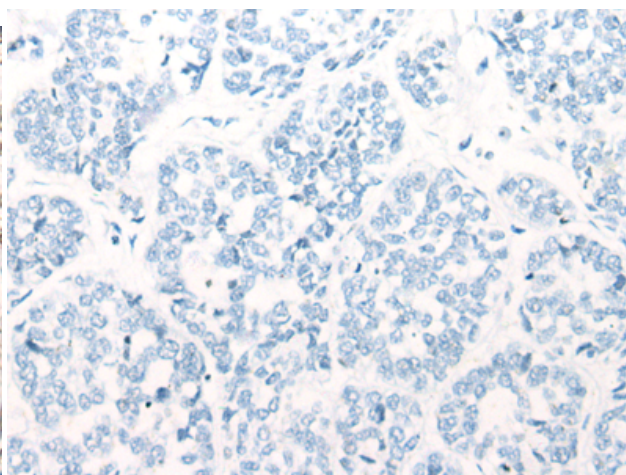
Constituents: PBS (without Mg²⁺ and Ca²⁺), pH 7.4, 150 mM NaCl, 0.05% Sodium Azide and 40% glycerol

Research Areas: Epigenetics and Nuclear Signaling

Storage & Shipping: Store at -20°C. Avoid repeated freezing and thawing



Immunohistochemistry analysis of paraffin embedded Human esophagus cancer tissue using 214296 (POLA1 Antibody) at a dilution of 1/30 (Nucleus).



In comparison with the IHC on the left, the same paraffin-embedded Human esophagus cancer tissue is first treated with the synthetic peptide and then with 214296 (Anti-POLA1 Antibody) at dilution 1/30.