

## POLB RABBIT PAB

**Cat.#:** S219468

**Product Name:** Anti-POLB Rabbit Polyclonal Antibody

**Synonyms:**

**UNIPROT ID:** P06746 (Gene Accession - BC106909 )

**Background:** The protein encoded by this gene is a DNA polymerase involved in base excision and repair, also called gap-filling DNA synthesis. The encoded protein, acting as a monomer, is normally found in the cytoplasm, but it translocates to the nucleus upon DNA damage. Several transcript variants of this gene exist, but the full-length nature of only one has been described to date. [provided by RefSeq, Sep 2011]

**Immunogen:** Fusion protein of human POLB

**Applications:** ELISA, WB, IHC

**Recommended Dilutions:** IHC: 100-300;WB: 500-2000;ELISA: 5000-10000

**Host Species:** Rabbit

**Clonality:** Rabbit Polyclonal

**Isotype:** Immunogen-specific rabbit IgG

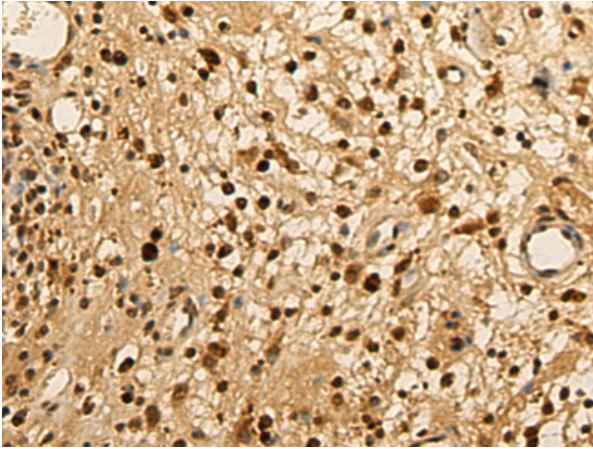
**Purification:** Antigen affinity purification

**Species Reactivity:** Human, Mouse, Rat

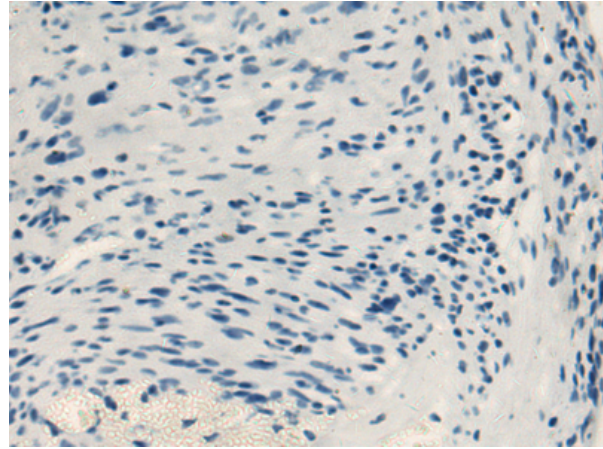
**Constituents:** PBS (without Mg<sup>2+</sup> and Ca<sup>2+</sup>), pH 7.4, 150 mM NaCl, 0.05% Sodium Azide and 40% glycerol

**Research Areas:** Epigenetics and Nuclear Signaling

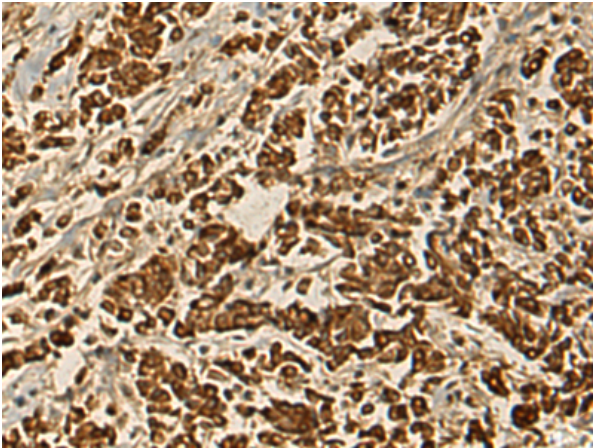
**Storage & Shipping:** Store at -20°C. Avoid repeated freezing and thawing



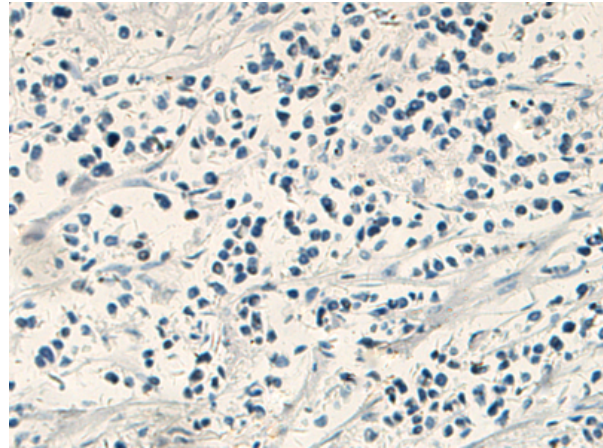
Immunohistochemistry analysis of paraffin embedded Human brain tissue using 219468 (POLB Antibody) at a dilution of 1/135 (Nucleus).



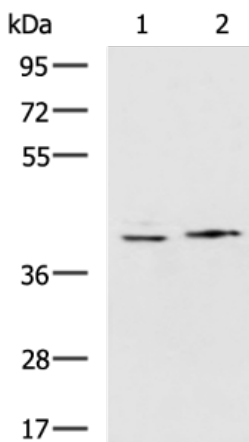
In comparison with the IHC on the left, the same paraffin-embedded Human brain tissue is first treated with the fusion protein and then with 219468 (Anti-POLB Antibody) at dilution 1/135.



The image on the left is immunohistochemistry of paraffin-embedded Human breast cancer tissue using 219468 (Anti-POLB Antibody) at a dilution of 1/135.



In comparison with the IHC on the left, the same paraffin-embedded Human breast cancer tissue is first treated with fusion protein and then with D227211 (Anti-POLB Antibody) at dilution 1/135.



Gel: 8%SDS-PAGE, Lysate: 40 µg;  
Lane 1-2: K562, Hela cell lysates;  
Primary antibody: 219468 (POLB Antibody) at dilution 1/800;  
Secondary antibody: HRP-conjugated Goat anti rabbit IgG at 1/5000 dilution;  
Exposure time: 1 minute



# Product Description

Pioneering GTPase and Oncogene Product Development since 2010

---