

POLD1 RABBIT MAB

Cat.#: N261616

Product Name: Anti-POLD1 Rabbit Monoclonal Antibody

Synonyms: CDC2; CRCS10; MDPL; POLD; POLD1

UNIPROT ID: P28340

Background: Possesses two enzymatic activities: DNA synthesis (polymerase) and an exonucleolytic activity that degrades single stranded DNA in the 3'- to 5'-direction. Required with its accessory proteins (proliferating cell nuclear antigen (PCNA) and replication factor C (RFC) or activator 1) for leading strand synthesis. Also involved in completing Okazaki fragments initiated by the DNA polymerase alpha/primase complex.

Immunogen: A synthetic peptide of human DNA Polymerase delta, catalytic subunit

Applications: WB,IHC-P,ICC/IF,FC

Recommended Dilutions: WB: 1/500-1/1000 IF: 1/50-1/200

Host Species: Rabbit

Clonality: Rabbit Monoclonal

Clone ID: R05-3H1

MW: Calculated MW: 124 kDa; Observed MW: 124 kDa

Isotype: IgG

Purification: Affinity Purified

Species Reactivity: Human,Mouse,Rat

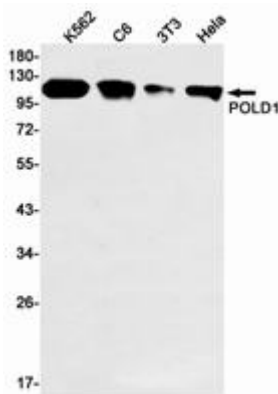
Conjugation: Unconjugated

Modification: Unmodified

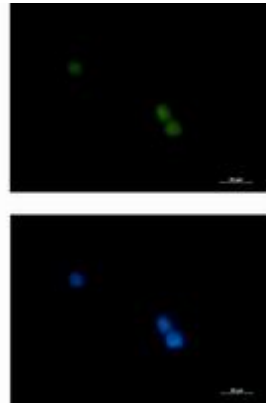
Constituents: PBS (without Mg²⁺ and Ca²⁺), pH 7.3 containing 50% glycerol, 0.5% BSA and 0.02% sodium azide

Research Areas: Epigenetics and Nuclear Signaling

Storage & Shipping: Store at -20°C. Avoid repeated freezing and thawing



Western blot analysis of POLD1 in K562, C6, 3T3, HeLa lysates using POLD1 antibody.



Immunocytochemistry analysis of POLD1 (green) in K562 using POLD1 antibody, and DAPI (blue).