

## POLE3 RABBIT PAB

**Cat.#:** S213095

**Product Name:** Anti-POLE3 Rabbit Polyclonal Antibody

**Synonyms:** p17; YBL1; CHRAC2; CHRAC17; CHARAC17

**UNIPROT ID:** Q9NRF9 (Gene Accession - BC003166 )

**Background:** POLE3 is a histone-fold protein that interacts with other histone-fold proteins to bind DNA in a sequence-independent manner. These histone-fold protein dimers combine within larger enzymatic complexes for DNA transcription, replication, and packaging.

**Immunogen:** Fusion protein of human POLE3

**Applications:** ELISA, IHC

**Recommended Dilutions:** IHC: 50-200; ELISA: 5000-10000

**Host Species:** Rabbit

**Clonality:** Rabbit Polyclonal

**Isotype:** Immunogen-specific rabbit IgG

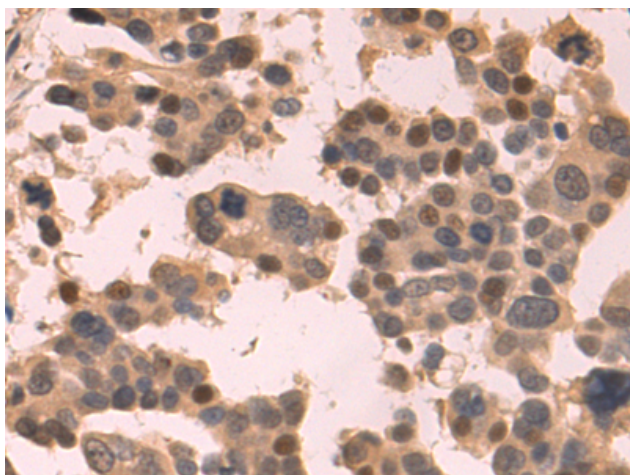
**Purification:** Antigen affinity purification

**Species Reactivity:** Human

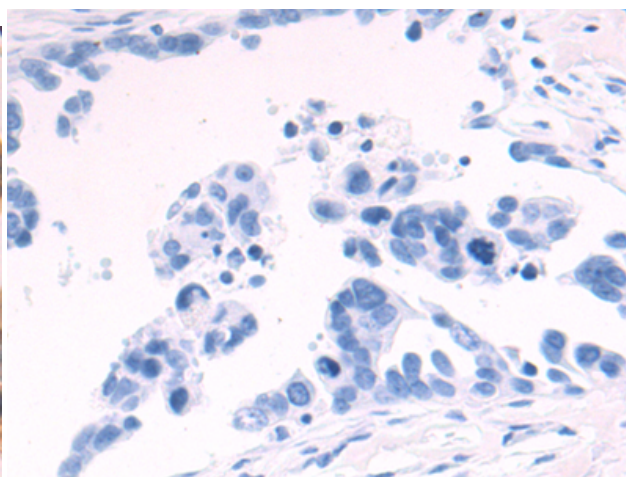
**Constituents:** PBS (without Mg<sup>2+</sup> and Ca<sup>2+</sup>), pH 7.4, 150 mM NaCl, 0.05% Sodium Azide and 40% glycerol

**Research Areas:** Epigenetics and Nuclear Signaling

**Storage & Shipping:** Store at -20°C. Avoid repeated freezing and thawing



Immunohistochemistry analysis of paraffin embedded Human colorectal cancer tissue using 213095 (POLE3 Antibody) at a dilution of 1/75 (Nucleus and Cytoplasm).



In comparison with the IHC on the left, the same paraffin-embedded Human colorectal cancer tissue is first treated with the fusion protein and then with 213095 (Anti-POLE3 Antibody) at dilution 1/75.