

## POLR2D RABBIT PAB

**Cat.#:** S218805

**Product Name:** Anti-POLR2D Rabbit Polyclonal Antibody

**Synonyms:** RBP4; RPB4; RPB16; HSRBP4; HSRPB4

**UNIPROT ID:** O15514 (Gene Accession - BC017205 )

**Background:** This gene encodes the fourth largest subunit of RNA polymerase II, the polymerase responsible for synthesizing messenger RNA in eukaryotes. In yeast, this polymerase subunit is associated with the polymerase under suboptimal growth conditions and may have a stress protective role. A sequence for a ribosomal pseudogene is contained within the 3' untranslated region of the transcript from this gene.

**Immunogen:** Fusion protein of human POLR2D

**Applications:** ELISA, IHC

**Recommended Dilutions:** IHC: 50-200; ELISA: 5000-10000

**Host Species:** Rabbit

**Clonality:** Rabbit Polyclonal

**Isotype:** Immunogen-specific rabbit IgG

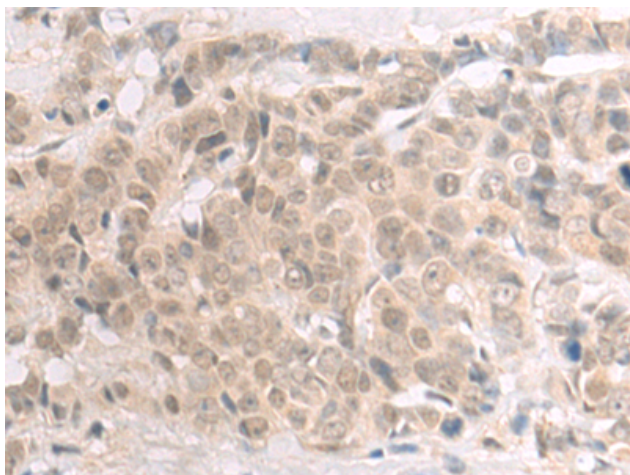
**Purification:** Antigen affinity purification

**Species Reactivity:** Human, Mouse

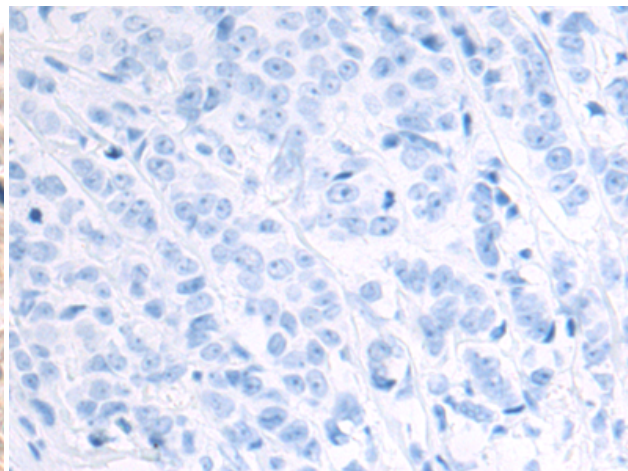
**Constituents:** PBS (without Mg<sup>2+</sup> and Ca<sup>2+</sup>), pH 7.4, 150 mM NaCl, 0.05% Sodium Azide and 40% glycerol

**Research Areas:** Epigenetics and Nuclear Signaling

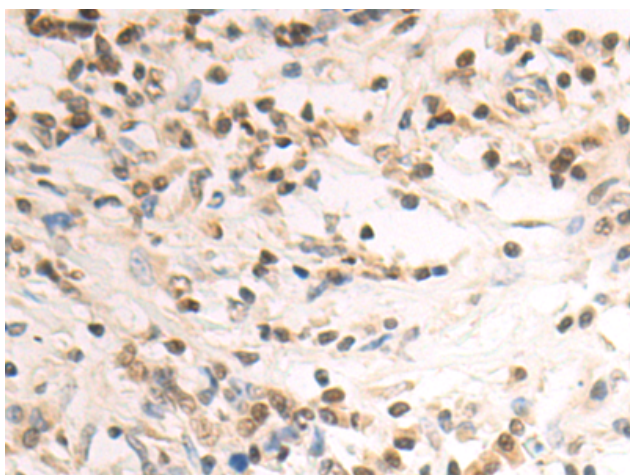
**Storage & Shipping:** Store at -20°C. Avoid repeated freezing and thawing



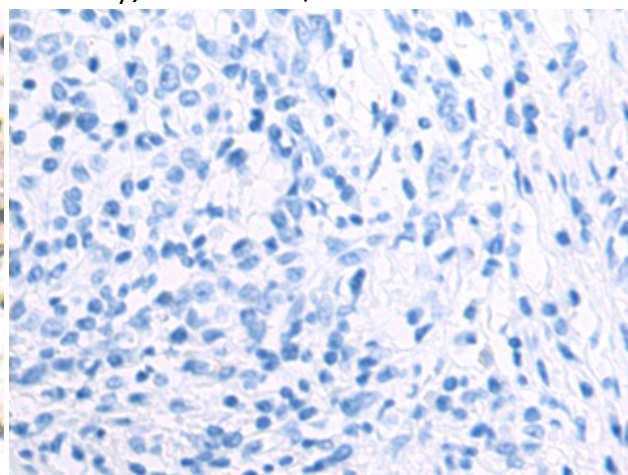
Immunohistochemistry analysis of paraffin embedded Human breast cancer tissue using 218805(POLR2D Antibody) at a dilution of 1/55(Nucleus).



In comparison with the IHC on the left, the same paraffin-embedded Human breast cancer tissue is first treated with the fusion protein and then with 218805(Anti-POLR2D Antibody) at dilution 1/55.



The image on the left is immunohistochemistry of paraffin-embedded Human gastric cancer tissue using 218805(Anti-POLR2D Antibody) at a dilution of 1/55.



In comparison with the IHC on the left, the same paraffin-embedded Human gastric cancer tissue is first treated with fusion protein and then with D225245(Anti-POLR2D Antibody) at dilution 1/55.