

POU2AF1 RABBIT PAB

Cat.#: S213403

Product Name: Anti-POU2AF1 Rabbit Polyclonal Antibody

Synonyms: BOB1, OBF1, OCAB, OBF-1

UNIPROT ID: Q16633 (Gene Accession - NP_006226)

Background: POU domain class 2-associating factor 1 is a protein that in humans is encoded by the POU2AF1 gene. POU2AF1 has been shown to interact with POU2F1 and SIAH1. POU domain class 2-associating factor 1 is a protein that in humans is encoded by the POU2AF1 gene. Transcriptional coactivator that specifically associates with either OCT1 or OCT2. It encourages the OCT1 mediated promoter activity and to a lesser extent, that of OCT2. It has no intrinsic DNA-binding activity. It recognizes the POU domains of OCT1 and OCT2. It is necessary for the response of B-cells to antigens and required for the formation of germinal centers.

Immunogen: Synthetic peptide of human POU2AF1

Applications: ELISA, IHC

Recommended Dilutions: IHC: Oct-50; ELISA: 1000-2000

Host Species: Rabbit

Clonality: Rabbit Polyclonal

Isotype: Immunogen-specific rabbit IgG

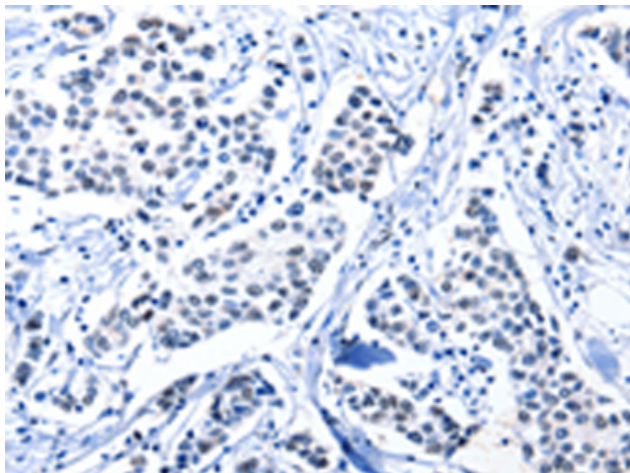
Purification: Antigen affinity purification

Species Reactivity: Human, Mouse

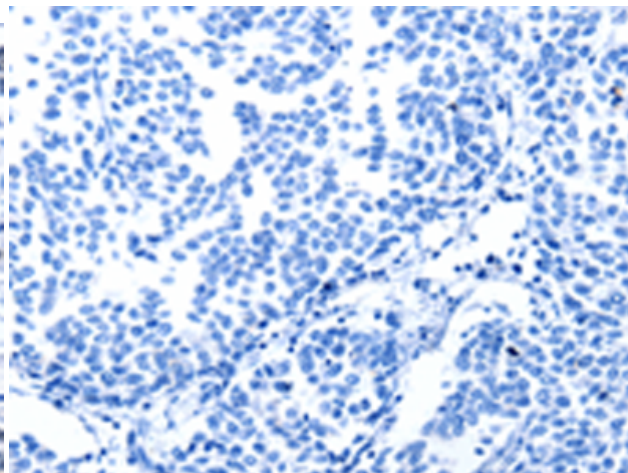
Constituents: PBS (without Mg²⁺ and Ca²⁺), pH 7.4, 150 mM NaCl, 0.05% Sodium Azide and 40% glycerol

Research Areas: Epigenetics and Nuclear Signaling, Immunology

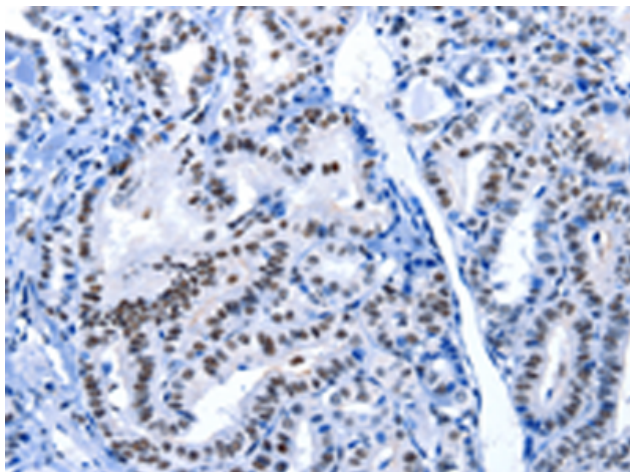
Storage & Shipping: Store at -20°C. Avoid repeated freezing and thawing



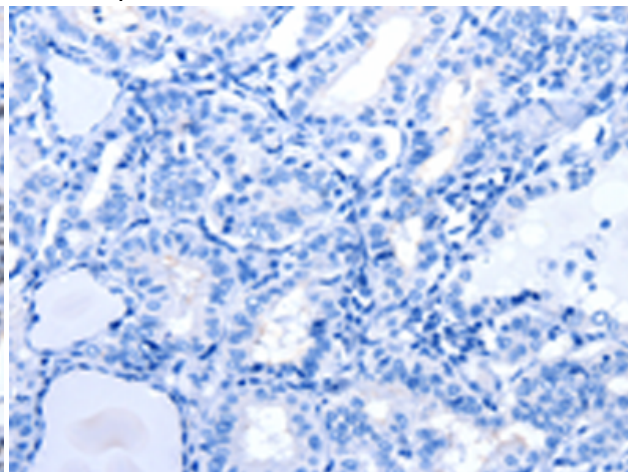
Immunohistochemistry analysis of paraffin embedded Human breast cancer tissue using 213403(POU2AF1 Antibody) at a dilution of 1/15(Nucleus).



In comparison with the IHC on the left, the same paraffin-embedded Human breast cancer tissue is first treated with the synthetic peptide and then with 213403(Anti-POU2AF1 Antibody) at dilution 1/15.



The image on the left is immunohistochemistry of paraffin-embedded Human thyroid cancer tissue using 213403(Anti-POU2AF1 Antibody) at a dilution of 1/15.



In comparison with the IHC on the left, the same paraffin-embedded Human thyroid cancer tissue is first treated with synthetic peptide and then with D160130(Anti-POU2AF1 Antibody) at dilution 1/15.