

## POU2F1 RABBIT PAB

**Cat.#:** S216694

**Product Name:** Anti-POU2F1 Rabbit Polyclonal Antibody

**Synonyms:** OCT1, OTF1, oct-1B

**UNIPROT ID:** P14859 (Gene Accession - BC001664 )

**Background:** The OCT1 transcription factor was among the first identified members of the POU transcription factor family. Members of this family contain the POU domain, a 160-amino acid region necessary for DNA binding to the octameric sequence ATGCAAAT.

**Immunogen:** Fusion protein of human POU2F1

**Applications:** ELISA, WB, IHC

**Recommended Dilutions:** IHC: 25-100;WB: 200-1000;ELISA: 1000-2000

**Host Species:** Rabbit

**Clonality:** Rabbit Polyclonal

**Isotype:** Immunogen-specific rabbit IgG

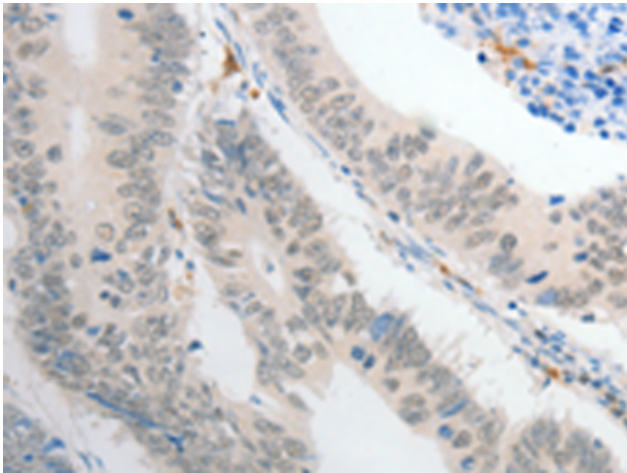
**Purification:** Antigen affinity purification

**Species Reactivity:** Human, Mouse

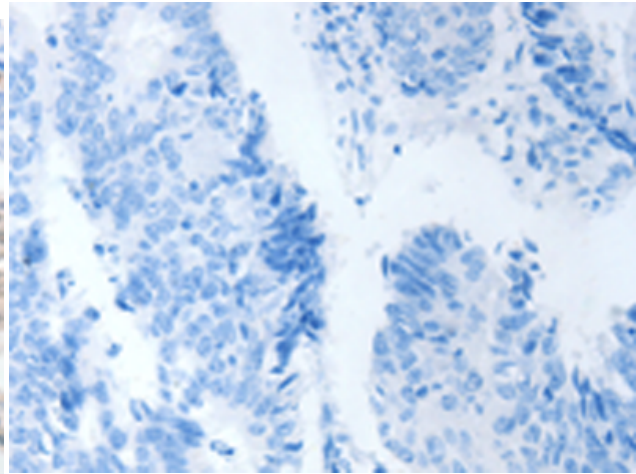
**Constituents:** PBS (without Mg<sup>2+</sup> and Ca<sup>2+</sup>), pH 7.4, 150 mM NaCl, 0.05% Sodium Azide and 40% glycerol

**Research Areas:** Epigenetics and Nuclear Signaling

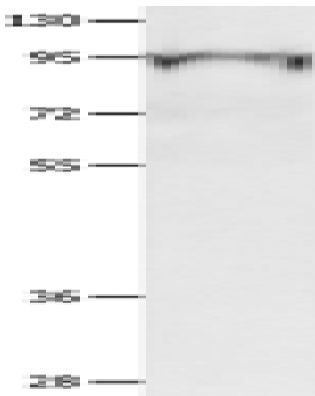
**Storage & Shipping:** Store at -20°C. Avoid repeated freezing and thawing



Immunohistochemistry analysis of paraffin embedded Human colon cancer tissue using 216694 (POU2F1 Antibody) at a dilution of 1/30 (cytoplasm, Nucleus).



In comparison with the IHC on the left, the same paraffin-embedded Human colon cancer tissue is first treated with the fusion protein and then with 216694 (Anti-POU2F1 Antibody) at dilution 1/30.



Gel: 8% SDS-PAGE, Lysate: 40 µg;  
Lane: 293T cells;  
Primary antibody: 216694 (POU2F1 Antibody) at dilution 1/400;  
Secondary antibody: Goat anti rabbit IgG at 1/8000 dilution;  
Exposure time: 15 seconds