

## POU3F1 RABBIT PAB

**Cat.#:** S213919

**Product Name:** Anti-POU3F1 Rabbit Polyclonal Antibody

**Synonyms:** OCT6; OTF6; SCIP

**UNIPROT ID:** Q03052 (Gene Accession - NP\_002690.3 )

**Background:** This gene belongs to the POU transcription factor family. Class-3 subfamily. It is transcription factor that binds to the octamer motif (5'-ATTGTCAT-3'). Thought to be involved in early embryogenesis and neurogenesis. Mostly expressed in embryonal stem cells and in the developing brain.

**Immunogen:** Synthetic peptide of human POU3F1

**Applications:** ELISA, IHC

**Recommended Dilutions:** IHC: 50-200; ELISA: 2000-5000

**Host Species:** Rabbit

**Clonality:** Rabbit Polyclonal

**Isotype:** Immunogen-specific rabbit IgG

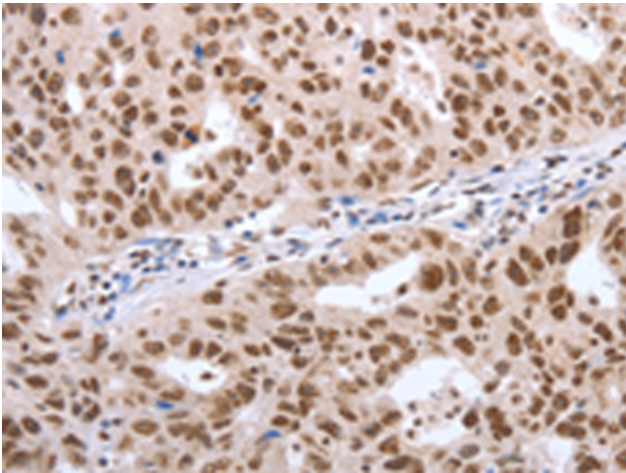
**Purification:** Antigen affinity purification

**Species Reactivity:** Human, Mouse, Rat

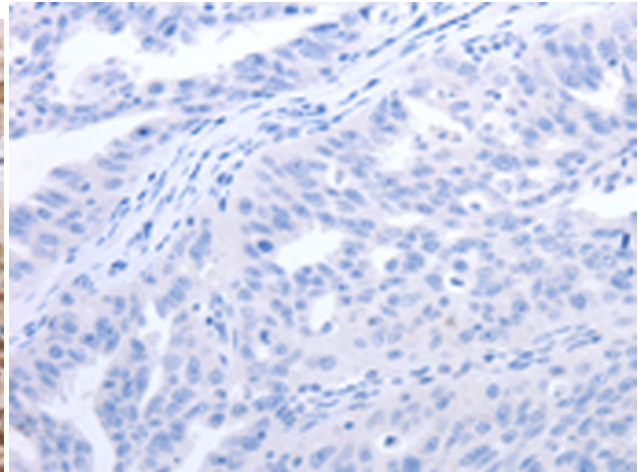
**Constituents:** PBS (without Mg<sup>2+</sup> and Ca<sup>2+</sup>), pH 7.4, 150 mM NaCl, 0.05% Sodium Azide and 40% glycerol

**Research Areas:** Epigenetics and Nuclear Signaling, Neuroscience

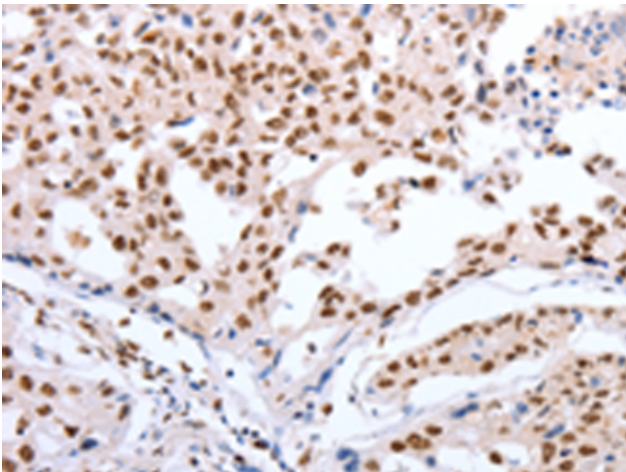
**Storage & Shipping:** Store at -20°C. Avoid repeated freezing and thawing



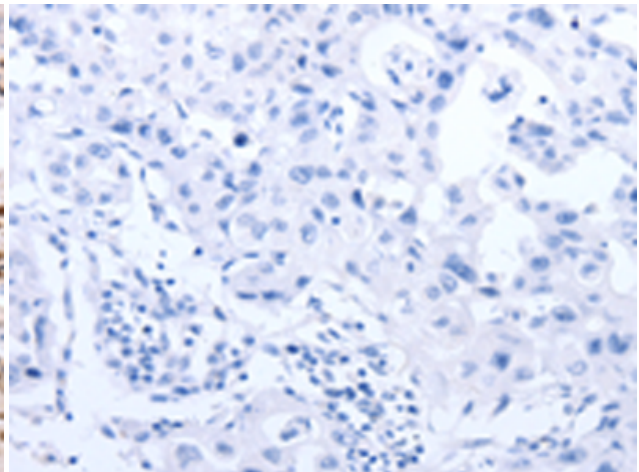
Immunohistochemistry analysis of paraffin embedded Human ovarian cancer tissue using 213919(POU3F1 Antibody) at a dilution of 1/40(Nucleus).



In comparison with the IHC on the left, the same paraffin-embedded Human ovarian cancer tissue is first treated with the synthetic peptide and then with 213919(Anti-POU3F1 Antibody) at dilution 1/40.



The image on the left is immunohistochemistry of paraffin-embedded Human lung cancer tissue using 213919(Anti-POU3F1 Antibody) at a dilution of 1/40.



In comparison with the IHC on the left, the same paraffin-embedded Human lung cancer tissue is first treated with synthetic peptide and then with D161058(Anti-POU3F1 Antibody) at dilution 1/40.