

## POU4F1 RABBIT PAB

**Cat.#:** S220409

**Product Name:** Anti-POU4F1 Rabbit Polyclonal Antibody

**Synonyms:** BRN3A; RDC-1; Oct-T1; brn-3A

**UNIPROT ID:** Q01851 (Gene Accession - NP\_006228 )

**Background:** This gene encodes a member of the POU-IV class of neural transcription factors. This protein is expressed in a subset of retinal ganglion cells and may be involved in the developing sensory nervous system. This protein may also promote the growth of cervical tumors. A translocation of this gene is associated with some adult acute myeloid leukemias.

**Immunogen:** Synthetic peptide of human POU4F1

**Applications:** ELISA, IHC

**Recommended Dilutions:** IHC: 25-100; ELISA: 1000-5000

**Host Species:** Rabbit

**Clonality:** Rabbit Polyclonal

**Isotype:** Immunogen-specific rabbit IgG

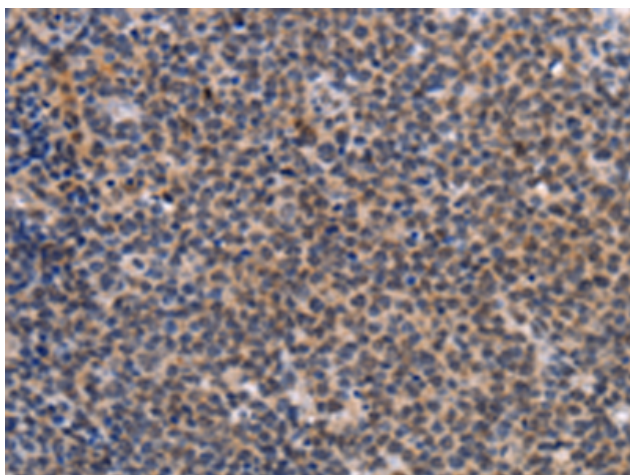
**Purification:** Antigen affinity purification

**Species Reactivity:** Human, Mouse

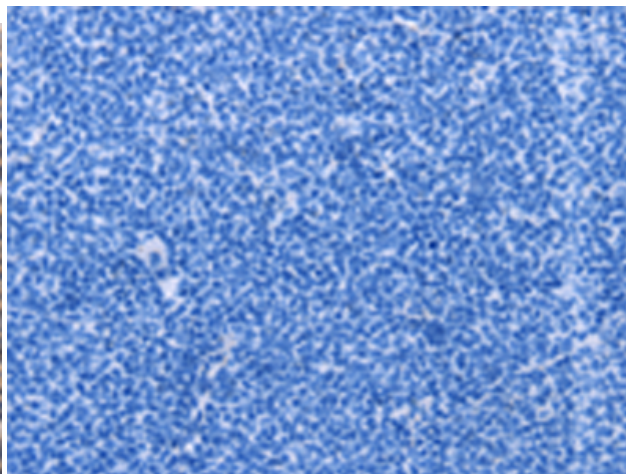
**Constituents:** PBS (without Mg<sup>2+</sup> and Ca<sup>2+</sup>), pH 7.4, 150 mM NaCl, 0.05% Sodium Azide and 40% glycerol

**Research Areas:** Epigenetics and Nuclear Signaling, Neuroscience

**Storage & Shipping:** Store at -20°C. Avoid repeated freezing and thawing



Immunohistochemistry analysis of paraffin embedded Human Lymphoma tissue using 220409(POU4F1 Antibody) at a dilution of 1/25(Nucleus ).



In comparison with the IHC on the left, the same paraffin-embedded Human Lymphoma tissue is first treated with the synthetic peptide and then with 220409(Anti-POU4F1 Antibody) at dilution 1/25.