

## PPAR ALPHA RABBIT PAB

**Cat.#:** N225396

**Product Name:** Anti-PPAR alpha Rabbit pAb

**Synonyms:** PPARG; NR1C1; PPAR; Peroxisome proliferator-activated receptor alpha; PPAR-alpha; Nuclear receptor subfamily 1 group C member 1

**UNIPROT ID:** Q07869

**Background:** Ligand-activated transcription factor.

**Immunogen:** The antiserum was produced against synthesized peptide derived from human PPAR-alpha. AA range:6-55

**Applications:** WB,IHC-F,IHC-P,ICC/IF,ELISA

**Recommended Dilutions:** WB: 1/500-1/1000 IHC: 1/50-1/100 IF: 1/50-1/200 ELISA: 1/10000

**Host Species:** Rabbit

**Clonality:** Rabbit Polyclonal

**Clone ID:** -

**MW:** Calculated MW: 52 kDa; Observed MW: 52 kDa

**Isotype:** IgG

**Purification:** Affinity Purified

**Species Reactivity:** Human,Mouse,Rat

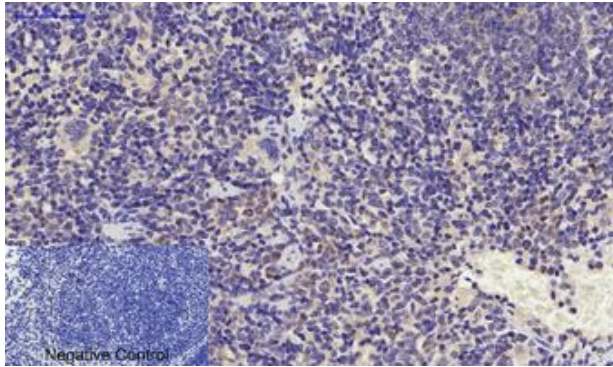
**Conjugation:** Unconjugated

**Modification:** Unmodified

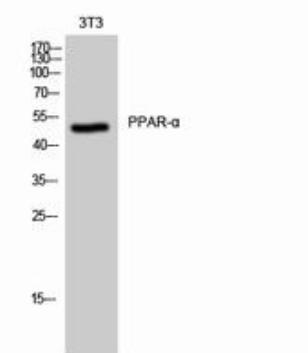
**Constituents:** PBS (without Mg<sup>2+</sup> and Ca<sup>2+</sup>), pH 7.3 containing 50% glycerol, 0.5% BSA and 0.02% sodium azide

**Research Areas:** Epigenetics and Nuclear Signaling

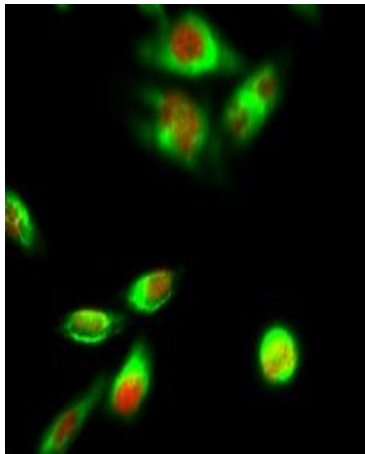
**Storage & Shipping:** Store at -20°C. Avoid repeated freezing and thawing



Immunohistochemistry analysis of paraffin-embedded mouse spleen tissue using PPAR $\alpha$  antibody. High-pressure and temperature Sodium Citrate pH 6.0 was used for antigen retrieval.



Western blot analysis of PPAR alpha in 3T3 lysates using PPAR alpha antibody.



Immunofluorescence analysis of PPAR alpha in Hela cell using PPAR $\alpha$  antibody (red) and Galectin3 antibody (green)