

## PPEF1 RABBIT PAB

**Cat.#:** S219168

**Product Name:** Anti-PPEF1 Rabbit Polyclonal Antibody

**Synonyms:** PP7; PPEF; PPP7C; PPP7CA

**UNIPROT ID:** O14829 (Gene Accession - BC036026 )

**Background:** This gene encodes a member of the serine/threonine protein phosphatase with EF-hand motif family. The protein contains a protein phosphatase catalytic domain, and at least two EF-hand calcium-binding motifs in its C terminus. Although its substrate(s) is unknown, the encoded protein has been suggested to play a role in specific sensory neuron function and/or development. This gene shares high sequence similarity with the Drosophila retinal degeneration C (rdgC) gene. Several alternatively spliced transcript variants, each encoding a distinct isoform, have been described.

**Immunogen:** Fusion protein of human PPEF1

**Applications:** ELISA, WB, IHC

**Recommended Dilutions:** IHC: 80-400;WB: 1000-5000;ELISA: 5000-10000

**Host Species:** Rabbit

**Clonality:** Rabbit Polyclonal

**Isotype:** Immunogen-specific rabbit IgG

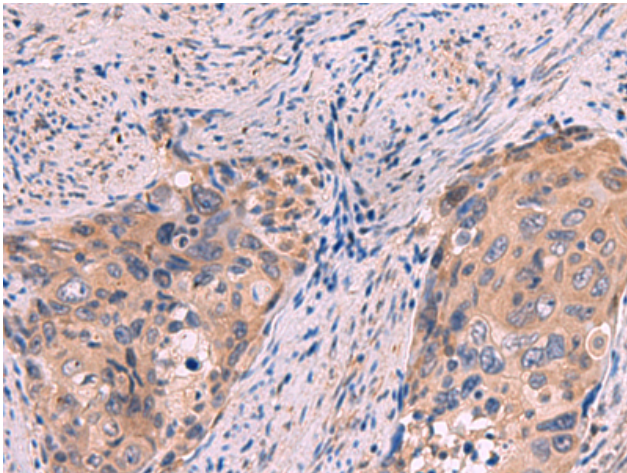
**Purification:** Antigen affinity purification

**Species Reactivity:** Human

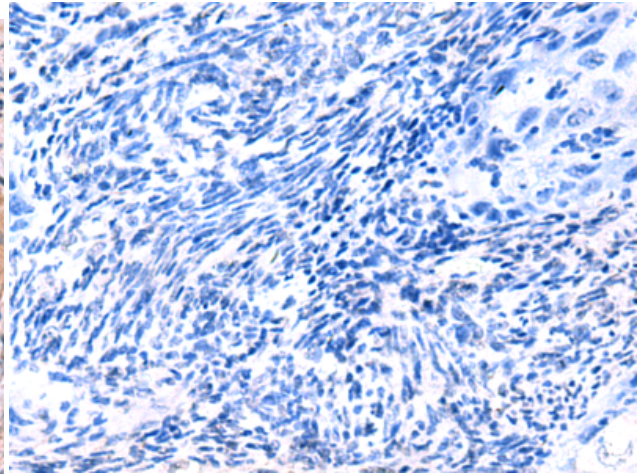
**Constituents:** PBS (without Mg<sup>2+</sup> and Ca<sup>2+</sup>), pH 7.4, 150 mM NaCl, 0.05% Sodium Azide and 40% glycerol

**Research Areas:** Signal Transduction

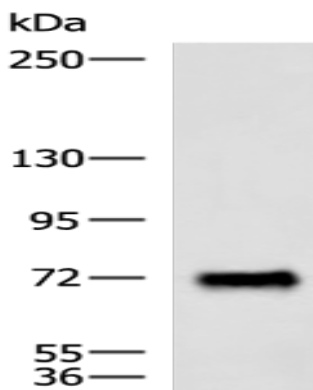
**Storage & Shipping:** Store at -20°C. Avoid repeated freezing and thawing



Immunohistochemistry analysis of paraffin embedded Human cervical cancer tissue using 219168(PPEF1 Antibody) at a dilution of 1/100(Cytoplasm).



In comparison with the IHC on the left, the same paraffin-embedded Human cervical cancer tissue is first treated with the fusion protein and then with 219168(Anti-PPEF1 Antibody) at dilution 1/100.



Gel: 6%SDS-PAGE, Lysate: 40  $\mu$ g;  
Lane: Human fetal brain tissue lysate;  
Primary antibody: 219168(PPEF1 Antibody) at dilution 1/1500;  
Secondary antibody: HRP-conjugated Goat anti rabbit IgG at 1/5000 dilution;  
Exposure time: 1 minute