

PPIA RABBIT PAB

Cat.#: S217707

Product Name: Anti-PPIA Rabbit Polyclonal Antibody

Synonyms: CYPA; CYPH; HEL-S-69p

UNIPROT ID: P62937 (Gene Accession - BC000689)

Background: This gene encodes a member of the peptidyl-prolyl cis-trans isomerase (PPIase) family. PPIases catalyze the cis-trans isomerization of proline imidic peptide bonds in oligopeptides and accelerate the folding of proteins. The encoded protein is a cyclosporin binding-protein and may play a role in cyclosporin A-mediated immunosuppression. The protein can also interact with several HIV proteins, including p55 gag, Vpr, and capsid protein, and has been shown to be necessary for the formation of infectious HIV virions.

Immunogen: Fusion protein of human PPIA

Applications: ELISA, WB, IHC

Recommended Dilutions: IHC: 40-150;WB: 500-2000;ELISA: 2000-5000

Host Species: Rabbit

Clonality: Rabbit Polyclonal

Isotype: Immunogen-specific rabbit IgG

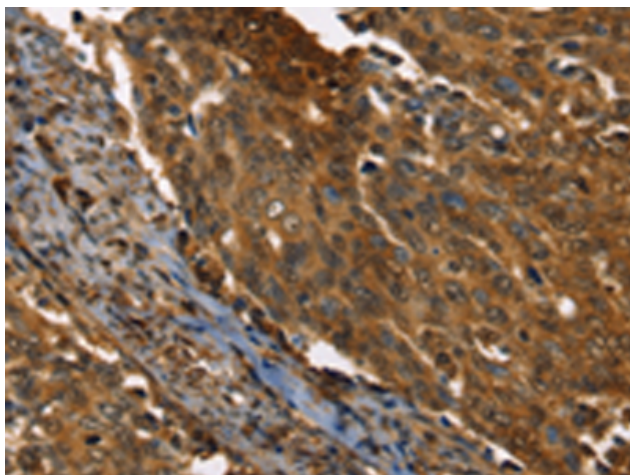
Purification: Antigen affinity purification

Species Reactivity: Human, Mouse, Rat

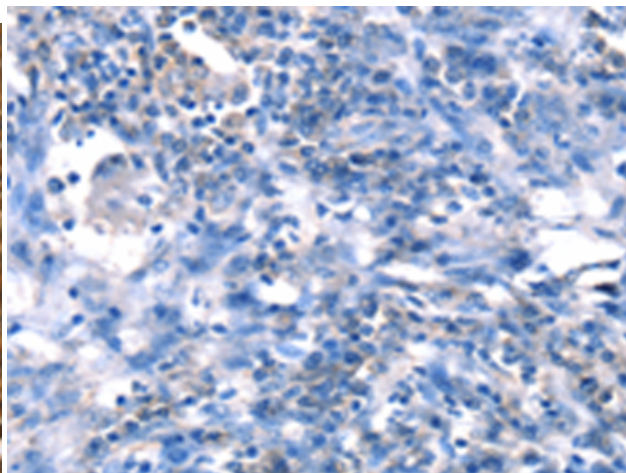
Constituents: PBS (without Mg²⁺ and Ca²⁺), pH 7.4, 150 mM NaCl, 0.05% Sodium Azide and 40% glycerol

Research Areas: Signal Transduction, Immunology

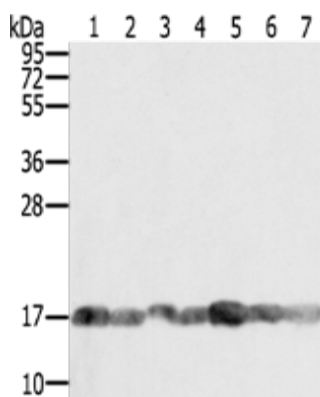
Storage & Shipping: Store at -20°C. Avoid repeated freezing and thawing



Immunohistochemistry analysis of paraffin embedded Human cervical cancer tissue using 217707(PPIA Antibody) at a dilution of 1/35(Cytoplasm).



In comparison with the IHC on the left, the same paraffin-embedded Human cervical cancer tissue is first treated with the fusion protein and then with 217707(Anti-PPIA Antibody) at dilution 1/35.



Gel: 12%SDS-PAGE, Lysate: 40 µg;
 Lane 1-7: PC3 cells, Raji cells, NIH/3T3 cells,
 K562 cells, hela cells, hepg2 cells, Jurkat cells;
 Primary antibody: 217707(PPIA Antibody) at
 dilution 1/400;
 Secondary antibody: Goat anti rabbit IgG at
 1/8000 dilution;
 Exposure time: 5 seconds