

PPM1M RABBIT PAB

Cat.#: S219284

Product Name: Anti-PPM1M Rabbit Polyclonal Antibody

Synonyms: PP2CE; PP2Ceta; PP2C-eta

UNIPROT ID: Q96MI6 (Gene Accession - BC009644)

Background: PPM1M is a member of the PP2C family of Ser/Thr protein phosphatases. PP2C family members are known to be negative regulators of cell stress response pathways. This phosphatase was identified as an interacting protein of Rho guanine nucleotide exchange factors (PIX). PIX proteins are regulators of p21/Cdc42/Rac1-activated kinase 1 (PAK1), a protein kinase mediating biological effects downstream of Rho GTPases. This phosphatase has been shown to block the effects of PAK, and thus inhibit actin stress fiber breakdown and morphological changes driven by cell division cycle 42 (CDC42).

Immunogen: Fusion protein of human PPM1M

Applications: ELISA, IHC

Recommended Dilutions: IHC: 100-300; ELISA: 5000-10000

Host Species: Rabbit

Clonality: Rabbit Polyclonal

Isotype: Immunogen-specific rabbit IgG

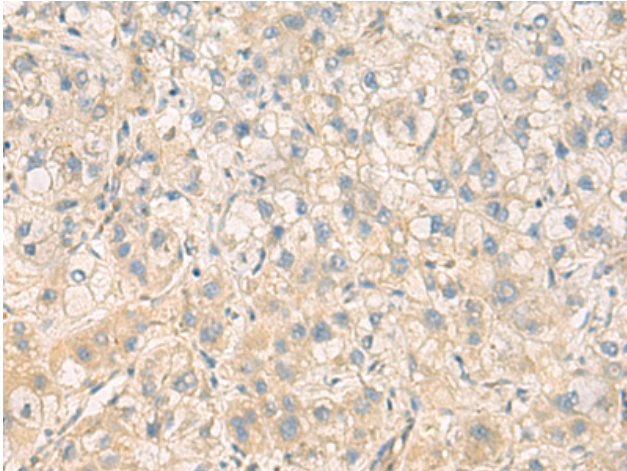
Purification: Antigen affinity purification

Species Reactivity: Human, Mouse

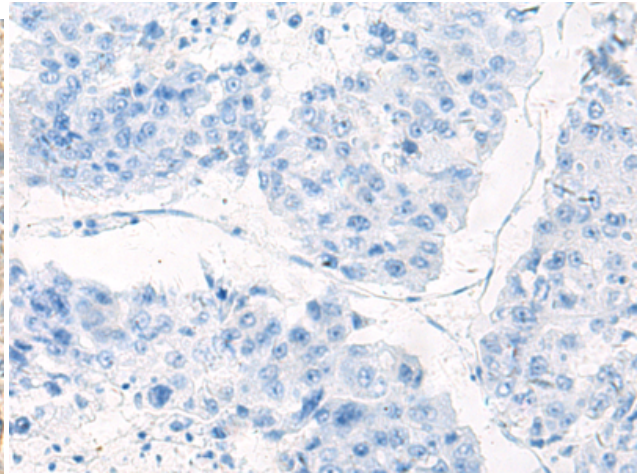
Constituents: PBS (without Mg²⁺ and Ca²⁺), pH 7.4, 150 mM NaCl, 0.05% Sodium Azide and 40% glycerol

Research Areas: Signal Transduction

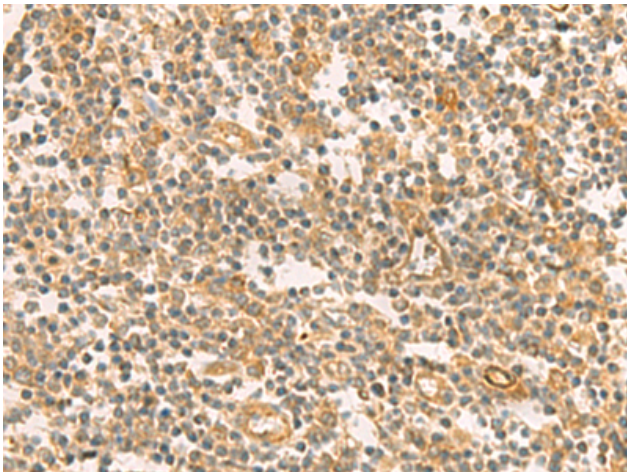
Storage & Shipping: Store at -20°C. Avoid repeated freezing and thawing



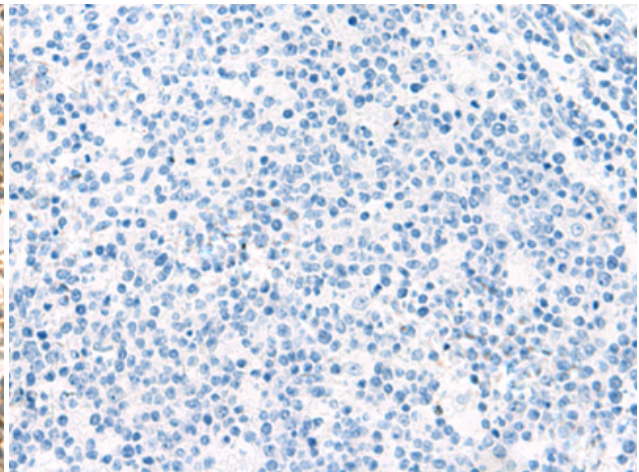
Immunohistochemistry analysis of paraffin embedded Human liver cancer tissue using 219284 (PPMIM Antibody) at a dilution of 1/100 (Cytoplasm).



In comparison with the IHC on the left, the same paraffin-embedded Human liver cancer tissue is first treated with the fusion protein and then with 219284 (Anti-PPMIM Antibody) at dilution 1/100.



The image on the left is immunohistochemistry of paraffin-embedded Human tonsil tissue using 219284 (Anti-PPMIM Antibody) at a dilution of 1/100.



In comparison with the IHC on the left, the same paraffin-embedded Human tonsil tissue is first treated with fusion protein and then with D226205 (Anti-PPMIM Antibody) at dilution 1/100.