

PPP2R5D RABBIT MAB

Cat.#: N262749

Product Name: Anti-PPP2R5D Rabbit Monoclonal Antibody

Synonyms: B56D; MRD35; B56delta

UNIPROT ID: Q14738

Background: The B regulatory subunit might modulate substrate selectivity and catalytic activity, and also might direct the localization of the catalytic enzyme to a particular subcellular compartment.

Immunogen: Recombinant protein of human PPP2R5D

Applications: WB,IP

Recommended Dilutions: WB: 1/500-1/1000 IP: 1/20

Host Species: Rabbit

Clonality: Rabbit Monoclonal

Clone ID: R08-2A4

MW: Calculated MW: 70 kDa; Observed MW: 70,66 kDa

Isotype: IgG

Purification: Affinity Purified

Species Reactivity: Human,Mouse,Rat

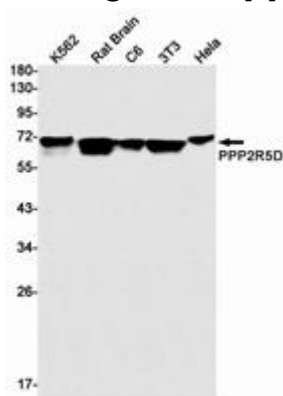
Conjugation: Unconjugated

Modification: Unmodified

Constituents: PBS (without Mg²⁺ and Ca²⁺), pH 7.3 containing 50% glycerol, 0.5% BSA and 0.02% sodium azide

Research Areas: Neuroscience

Storage & Shipping: Store at -20°C. Avoid repeated freezing and thawing



Western blot analysis of PPP2R5D in K562, rat Brain, C6, 3T3, HeLa lysates using PPP2R5D antibody.



Product Description

Pioneering GTPase and Oncogene Product Development since 2010
