

PPP2R5E RABBIT MAB

Cat.#: N263505

Product Name: Anti-PPP2R5E Rabbit Monoclonal Antibody

Synonyms: B56E; B56epsilon

UNIPROT ID: Q16537

Background: The B regulatory subunit might modulate substrate selectivity and catalytic activity, and also might direct the localization of the catalytic enzyme to a particular subcellular compartment.

Immunogen: A synthetic peptide of human PPP2R5E

Applications: WB,ICC/IF

Recommended Dilutions: WB: 1/500-1/1000 IF: 1/50-1/200

Host Species: Rabbit

Clonality: Rabbit Monoclonal

Clone ID: R06-4E6

MW: Calculated MW: 55 kDa; Observed MW: 55 kDa

Isotype: IgG

Purification: Affinity Purified

Species Reactivity: Human,Rat

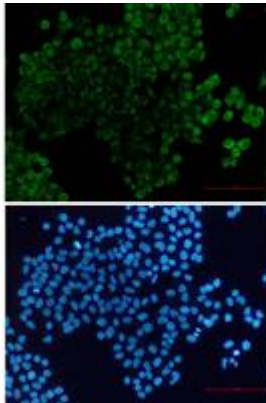
Conjugation: Unconjugated

Modification: Unmodified

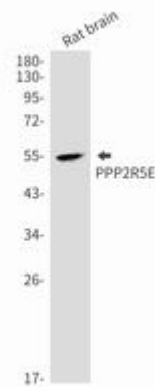
Constituents: PBS (without Mg²⁺ and Ca²⁺), pH 7.3 containing 50% glycerol, 0.5% BSA and 0.02% sodium azide

Research Areas: Neuroscience

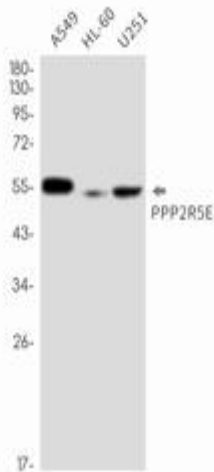
Storage & Shipping: Store at -20°C. Avoid repeated freezing and thawing



Immunocytochemistry analysis of PPP2R5E (green) in HeLa using PPP2R5E antibody, and DAPI (blue)



Western blot analysis of PPP2R5E in rat brain lysates using PPP2R5E antibody.



Western blot analysis of PPP2R5E in A549, HL-60, U251 lysates using PPP2R5E antibody.