

PPWD1 RABBIT PAB

Cat.#: S219569

Product Name: Anti-PPWD1 Rabbit Polyclonal Antibody

Synonyms:

UNIPROT ID: Q96BP3 (Gene Accession - BC015385)

Background: Enables cyclosporin A binding activity and peptidyl-prolyl cis-trans isomerase activity. Involved in protein peptidyl-prolyl isomerization. Located in nuclear body. Part of catalytic step 2 spliceosome.

Immunogen: Fusion protein of human PPWD1

Applications: ELISA, WB, IHC

Recommended Dilutions: IHC: 50-200;WB: 1000-5000;ELISA: 5000-10000

Host Species: Rabbit

Clonality: Rabbit Polyclonal

Isotype: Immunogen-specific rabbit IgG

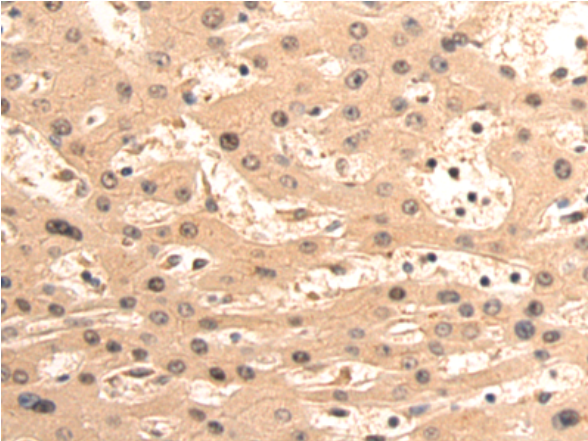
Purification: Antigen affinity purification

Species Reactivity: Human, Mouse

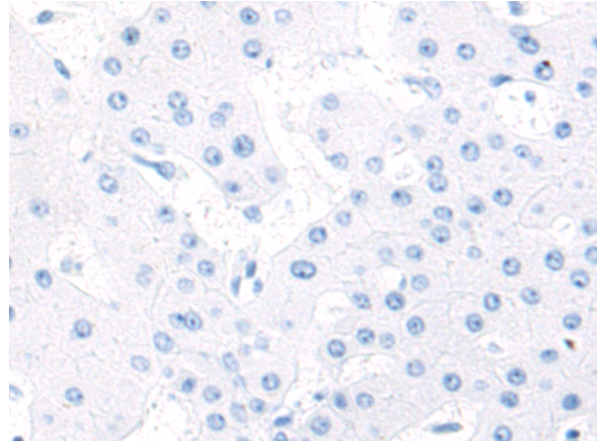
Constituents: PBS (without Mg²⁺ and Ca²⁺), pH 7.4, 150 mM NaCl, 0.05% Sodium Azide and 40% glycerol

Research Areas: Epigenetics and Nuclear Signaling

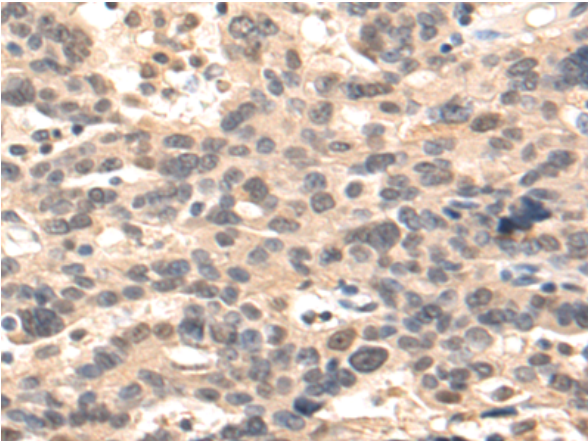
Storage & Shipping: Store at -20°C. Avoid repeated freezing and thawing



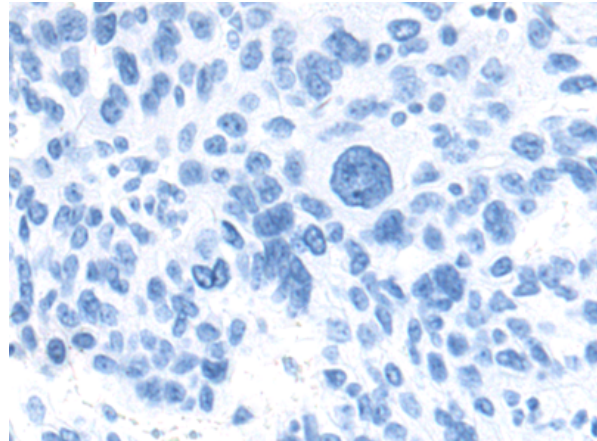
Immunohistochemistry analysis of paraffin embedded Human liver cancer tissue using 219569(PPWD1 Antibody) at a dilution of 1/80(Cytoplasm and Nucleus).



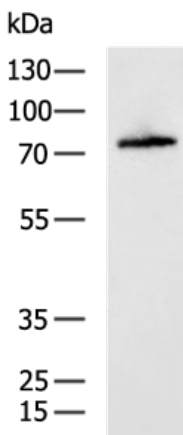
In comparison with the IHC on the left, the same paraffin-embedded Human liver cancer tissue is first treated with the fusion protein and then with 219569(Anti-PPWD1 Antibody) at dilution 1/80.



The image on the left is immunohistochemistry of paraffin-embedded Human breast cancer tissue using 219569(Anti-PPWD1 Antibody) at a dilution of 1/80.



In comparison with the IHC on the left, the same paraffin-embedded Human breast cancer tissue is first treated with fusion protein and then with D227781(Anti-PPWD1 Antibody) at dilution 1/80.



Gel: 8%SDS-PAGE, Lysate: 40 µg;
Lane: 293T cell lysate;
Primary antibody: 219569(PPWD1 Antibody) at dilution 1/1000;
Secondary antibody: HRP-conjugated Goat anti rabbit IgG at 1/5000 dilution;
Exposure time: 3 seconds



Product Description

Pioneering GTPase and Oncogene Product Development since 2010
