

PRAS40 RABBIT MAB

Cat.#: N263506

Product Name: Anti-PRAS40 Rabbit Monoclonal Antibody

Synonyms: AKT1S1; PRAS40; Proline-rich AKT1 substrate 1; 40 kDa proline-rich AKT substrate

UNIPROT ID: Q96B36

Background: PRAS40 interacts with Raptor in mTOR complex 1 (mTORC1) in insulin-deprived cells and inhibits the activation of the mTORC1 pathway mediated by the cell cycle protein Rheb. Phosphorylation of PRAS40 by Akt at Thr246 relieves PRAS40 inhibition of mTORC1. mTORC1 in turn phosphorylates PRAS40 at Ser183.

Immunogen: A synthetic peptide of human PRAS40

Applications: WB,IP

Recommended Dilutions: WB: 1/500-1/1000 IP: 1/20

Host Species: Rabbit

Clonality: Rabbit Monoclonal

Clone ID: R05-3A5

MW: Calculated MW: 27 kDa; Observed MW: 40 kDa

Isotype: IgG

Purification: Affinity Purified

Species Reactivity: Human,Rat

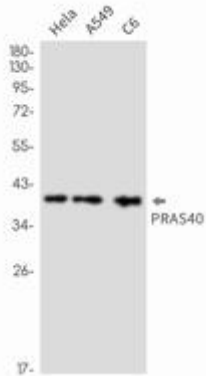
Conjugation: Unconjugated

Modification: Unmodified

Constituents: PBS (without Mg²⁺ and Ca²⁺), pH 7.3 containing 50% glycerol, 0.5% BSA and 0.02% sodium azide

Research Areas: Cell Biology

Storage & Shipping: Store at -20°C. Avoid repeated freezing and thawing



Western blot analysis of PRAS40 in HeLa, A549, C6 lysates using PRAS40 antibody.