

## PRC1 RABBIT PAB

**Cat.#:** N225553

**Product Name:** Anti-PRC1 Rabbit pAb

**Synonyms:** Protein regulator of cytokinesis 1

**UNIPROT ID:** O43663

**Background:** Cross-links antiparrallel microtubules at an average distance of 35 nM. Essential for controlling the spatiotemporal formation of the midzone and successful cytokinesis. Required for KIF14 localization to the central spindle and midbody.

**Immunogen:** A synthesized peptide derived from human PRC1

**Applications:** WB,IHC-P,ICC/IF,IP,FC

**Recommended Dilutions:** WB: 1/500-1/1000 IHC: 1/50-1/100 IF: 1/50-1/200 IP: 1/20 FC: 1/50-1/100

**Host Species:** Rabbit

**Clonality:** Rabbit Polyclonal

**Clone ID:** -

**MW:** Calculated MW: 72 kDa; Observed MW: 72 kDa

**Isotype:** IgG

**Purification:** Affinity Chromatography

**Species Reactivity:** Human,Mouse,Rat

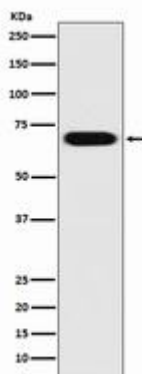
**Conjugation:** Unconjugated

**Modification:** Unmodified

**Constituents:** PBS (without Mg<sup>2+</sup> and Ca<sup>2+</sup>), pH 7.3 containing 50% glycerol, 0.5% BSA and 0.02% sodium azide

**Research Areas:** Cell Biology

**Storage & Shipping:** Store at -20°C. Avoid repeated freezing and thawing



Western blot analysis of PRC1 in HeLa lysates using PRC1 antibody.



# Product Description

Pioneering GTPase and Oncogene Product Development since 2010

---