

PRDX1 RABBIT PAB

Cat.#: S219974

Product Name: Anti-PRDX1 Rabbit Polyclonal Antibody

Synonyms: PAG, PAGA, PAGB, PRX1, PRXI, MSP23, NKEFA, TDPX2, NKEF-A

UNIPROT ID: Q06830 (Gene Accession - NP_001189360 NP_002565)

Background: This gene encodes a member of the peroxiredoxin family of antioxidant enzymes, which reduce hydrogen peroxide and alkyl hydroperoxides. The encoded protein may play an antioxidant protective role in cells, and may contribute to the antiviral activity of CD8(+) T-cells. This protein may have a proliferative effect and play a role in cancer development or progression. Four transcript variants encoding the same protein have been identified for this gene.

Immunogen: Synthetic peptide of human PRDX1

Applications: ELISA, WB, IHC

Recommended Dilutions: IHC: 25-100;WB: 200-1000;ELISA: 1000-2000

Host Species: Rabbit

Clonality: Rabbit Polyclonal

Isotype: Immunogen-specific rabbit IgG

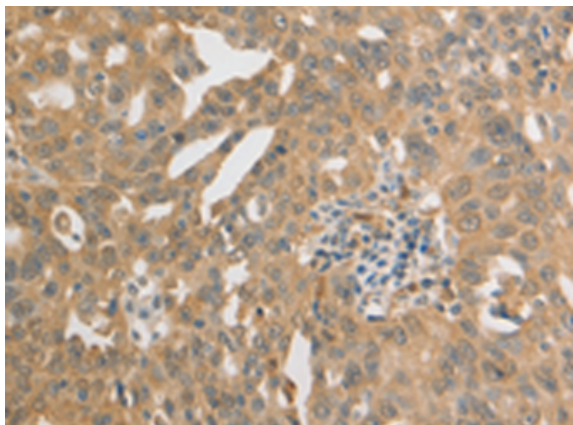
Purification: Antigen affinity purification

Species Reactivity: Human, Mouse, Rat

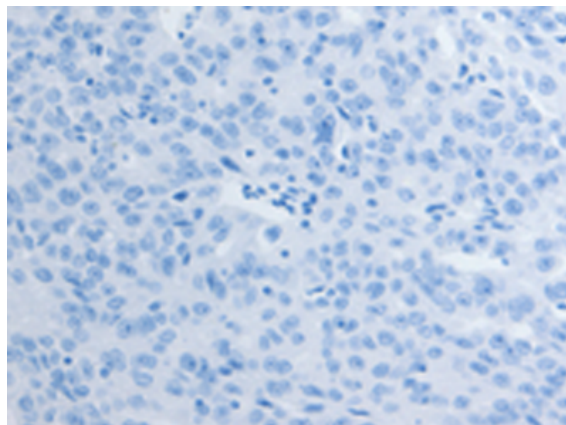
Constituents: PBS (without Mg²⁺ and Ca²⁺), pH 7.4, 150 mM NaCl, 0.05% Sodium Azide and 40% glycerol

Research Areas: Metabolism, Cell Biology, Cardiovascular

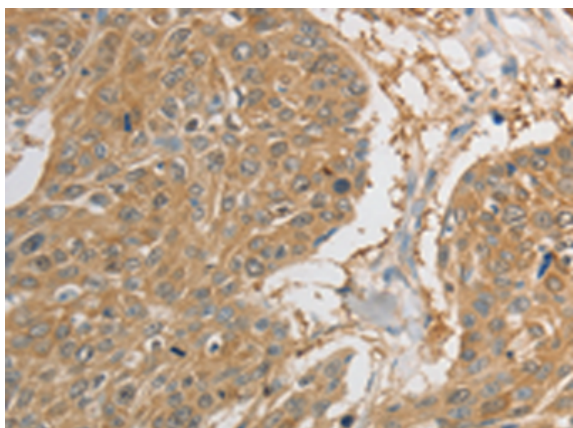
Storage & Shipping: Store at -20°C. Avoid repeated freezing and thawing



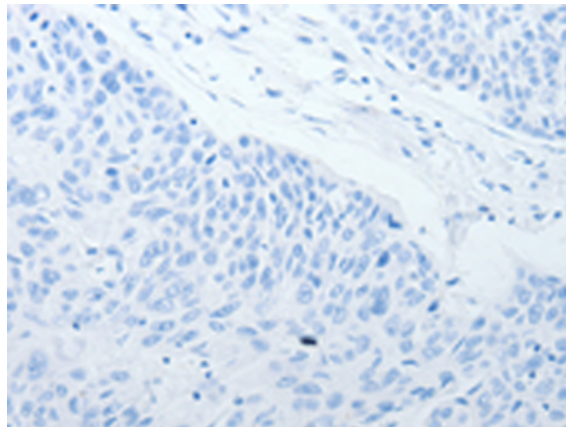
Immunohistochemistry analysis of paraffin embedded Human ovarian cancer tissue using 219974 (PRDX1 Antibody) at a dilution of 1/20 (Cytoplasm).



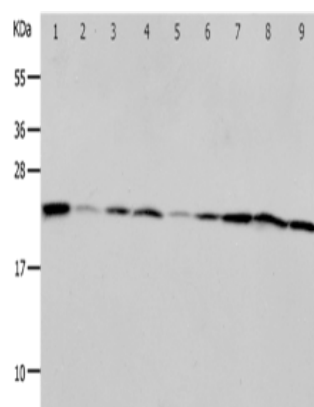
In comparison with the IHC on the left, the same paraffin-embedded Human ovarian cancer tissue is first treated with the synthetic peptide and then with 219974 (Anti-PRDX1 Antibody) at dilution 1/20.



The image on the left is immunohistochemistry of paraffin-embedded Human esophagus cancer tissue using 219974 (Anti-PRDX1 Antibody) at a dilution of 1/20.



In comparison with the IHC on the left, the same paraffin-embedded Human esophagus cancer tissue is first treated with synthetic peptide and then with D260717 (Anti-PRDX1 Antibody) at dilution 1/20.



Gel: 12% SDS-PAGE, Lysate: 40 µg;
 Lane 1-9: Mouse liver tissue, Mouse kidney tissue, NIH/3T3 cells, RAW264.7 cells, human fetal brain tissue, 293T cells, K562 cells, Jurkat cells, Hela cells;
 Primary antibody: 219974 (PRDX1 Antibody) at dilution 1/400;
 Secondary antibody: Goat anti rabbit IgG at 1/8000 dilution;
 Exposure time: 50 seconds



Product Description

Pioneering GTPase and Oncogene Product Development since 2010
