

## PRDX3 RABBIT PAB

**Cat.#:** S213722

**Product Name:** Anti-PRDX3 Rabbit Polyclonal Antibody

**Synonyms:** AOP1, MER5, AOP-1, SP-22, HBC189, PRO1748, prx-III

**UNIPROT ID:** P30048 (Gene Accession - NP\_006784 )

**Background:** This gene encodes a protein with antioxidant function and is localized in the mitochondrion. This gene shows significant nucleotide sequence similarity to the gene coding for the C22 subunit of *Salmonella typhimurium* alkylhydroperoxide reductase. Expression of this gene product in *E. coli* deficient in the C22-subunit gene rescued resistance of the bacteria to alkylhydroperoxide. The human and mouse genes are highly conserved, and they map to the regions syntenic between mouse and human chromosomes. Sequence comparisons with recently cloned mammalian homologues suggest that these genes consist of a family that is responsible for regulation of cellular proliferation, differentiation, and antioxidant functions. Two transcript variants encoding two different isoforms have been found for this gene.

**Immunogen:** Synthetic peptide of human PRDX3

**Applications:** ELISA, WB, IHC

**Recommended Dilutions:** IHC: 50-200;WB: 1000-5000;ELISA: 2000-10000

**Host Species:** Rabbit

**Clonality:** Rabbit Polyclonal

**Isotype:** Immunogen-specific rabbit IgG

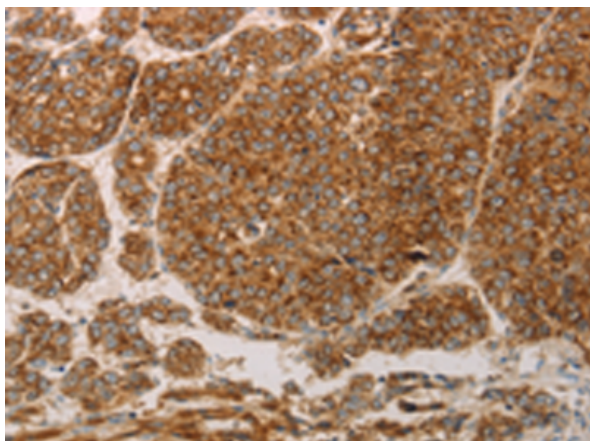
**Purification:** Antigen affinity purification

**Species Reactivity:** Human

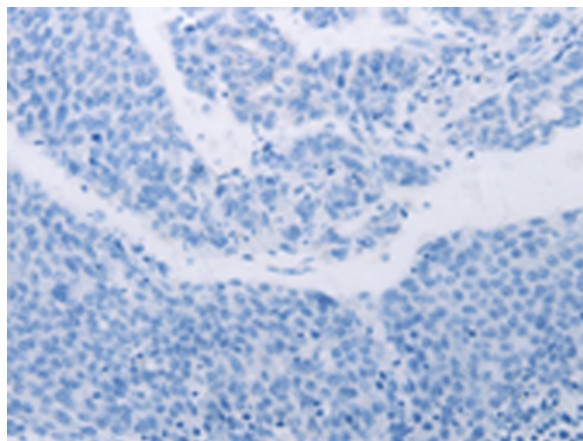
**Constituents:** PBS (without Mg<sup>2+</sup> and Ca<sup>2+</sup>), pH 7.4, 150 mM NaCl, 0.05% Sodium Azide and 40% glycerol

**Research Areas:** Signal Transduction, Cancer, Metabolism, Neuroscience, Cardiovascular

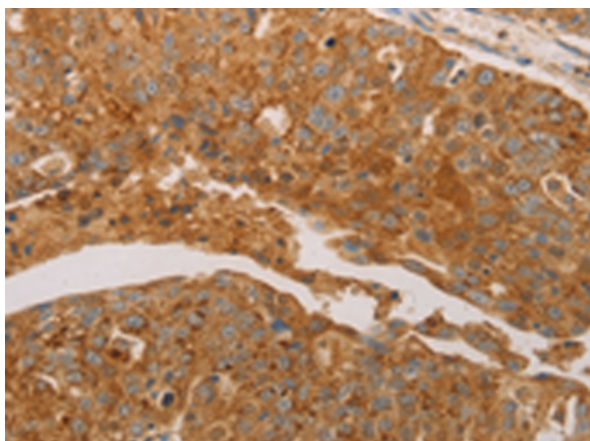
**Storage & Shipping:** Store at -20°C. Avoid repeated freezing and thawing



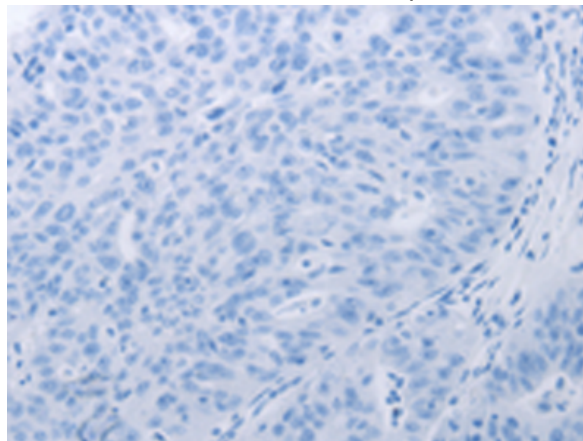
Immunohistochemistry analysis of paraffin embedded Human liver cancer tissue using 213722(PRDX3 Antibody) at a dilution of 1/50(Cytoplasm).



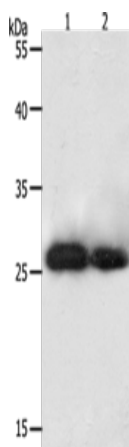
In comparison with the IHC on the left, the same paraffin-embedded Human liver cancer tissue is first treated with the synthetic peptide and then with 213722(Anti-PRDX3 Antibody) at dilution 1/50.



The image on the left is immunohistochemistry of paraffin-embedded Human ovarian cancer tissue using 213722(Anti-PRDX3 Antibody) at a dilution of 1/50.



In comparison with the IHC on the left, the same paraffin-embedded Human ovarian cancer tissue is first treated with synthetic peptide and then with D160719(Anti-PRDX3 Antibody) at dilution 1/50.



Gel: 10%SDS-PAGE, Lysate: 40 µg;  
 Lane 1-2: HeLa cells, 293T cells;  
 Primary antibody: 213722(PRDX3 Antibody) at dilution 1/800;  
 Secondary antibody: Goat anti rabbit IgG at 1/8000 dilution;  
 Exposure time: 20 seconds



# Product Description

Pioneering GTPase and Oncogene Product Development since 2010

---