

## PRDX6 RABBIT PAB

**Cat.#:** S216746

**Product Name:** Anti-PRDX6 Rabbit Polyclonal Antibody

**Synonyms:** PR,x p29, AOP2, 1-Cys, NSGP,x aiPLA2

**UNIPROT ID:** P30041 (Gene Accession - BC035857 )

**Background:** The protein encoded by this gene is a member of the thiol-specific antioxidant protein family. This protein is a bifunctional enzyme with two distinct active sites. It is involved in redox regulation of the cell; it can reduce H<sub>2</sub>O<sub>2</sub> and short chain organic, fatty acid, and phospholipid hydroperoxides. It may play a role in the regulation of phospholipid turnover as well as in protection against oxidative injury.

**Immunogen:** Fusion protein of human PRDX6

**Applications:** ELISA, WB, IHC

**Recommended Dilutions:** IHC: 25-100;WB: 500-2000;ELISA: 1000-5000

**Host Species:** Rabbit

**Clonality:** Rabbit Polyclonal

**Isotype:** Immunogen-specific rabbit IgG

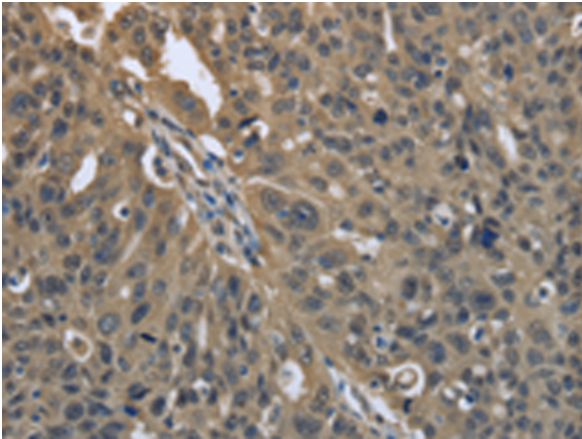
**Purification:** Antigen affinity purification

**Species Reactivity:** Human, Mouse, Rat

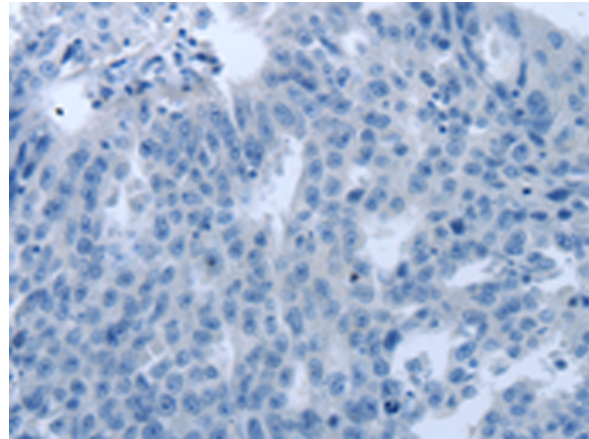
**Constituents:** PBS (without Mg<sup>2+</sup> and Ca<sup>2+</sup>), pH 7.4, 150 mM NaCl, 0.05% Sodium Azide and 40% glycerol

**Research Areas:** Metabolism, Cancer, Cell Biology, Cardiovascular

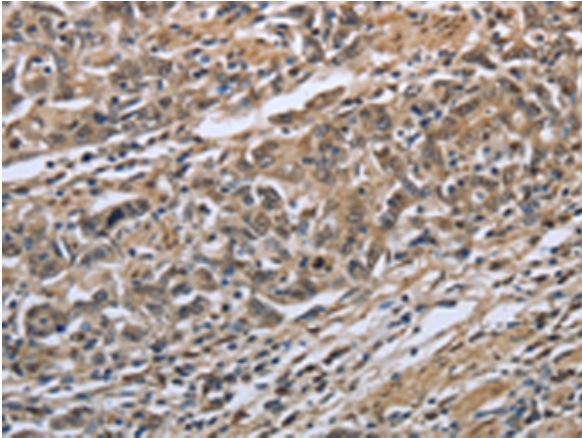
**Storage & Shipping:** Store at -20°C. Avoid repeated freezing and thawing



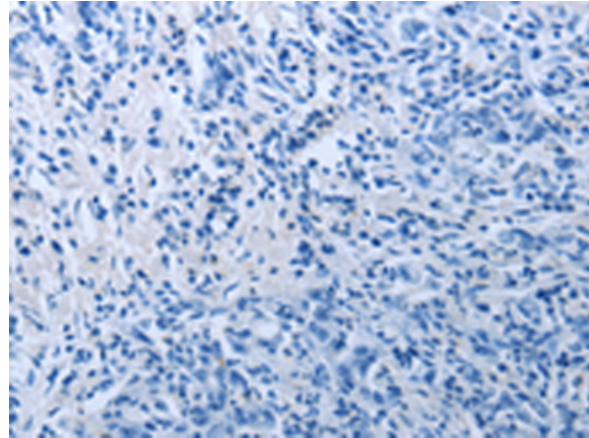
Immunohistochemistry analysis of paraffin embedded Human ovarian cancer tissue using 216746 (PRDX6 Antibody) at a dilution of 1/25 (Cytoplasm).



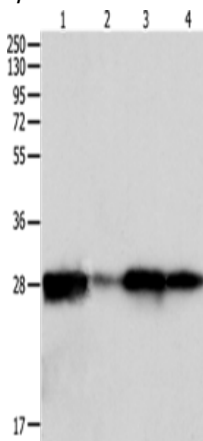
In comparison with the IHC on the left, the same paraffin-embedded Human ovarian cancer tissue is first treated with the fusion protein and then with 216746 (Anti-PRDX6 Antibody) at dilution 1/25.



The image on the left is immunohistochemistry of paraffin-embedded Human gastric cancer tissue using 216746 (Anti-PRDX6 Antibody) at a dilution of 1/25.



In comparison with the IHC on the left, the same paraffin-embedded Human gastric cancer tissue is first treated with fusion protein and then with D221159 (Anti-PRDX6 Antibody) at dilution 1/25.



Gel: 12% SDS-PAGE, Lysate: 60 µg;  
Lane 1-4: Hela cells, mouse intestine tissue, 293T cells, 231 cells;  
Primary antibody: 216746 (PRDX6 Antibody) at dilution 1/300;  
Secondary antibody: Goat anti rabbit IgG at 1/8000 dilution;  
Exposure time: 1 second



# Product Description

Pioneering GTPase and Oncogene Product Development since 2010

---