

## PREALBUMIN (1F6) MOUSE MAB

**Cat.#:** N261345

**Product Name:** Anti-Prealbumin (1F6) Mouse Monoclonal Antibody

**Synonyms:** Prealbumin; TBPA; Amyloidosis I; Transthyretin

**UNIPROT ID:** P02766

**Background:** Thyroid hormone-binding protein. Probably transports thyroxine from the bloodstream to the brain.

**Immunogen:** Purified recombinant protein expressed in E.coli.

**Applications:** WB,IHC-P

**Recommended Dilutions:** WB: 1/500-1/1000 IHC: 1/50-1/100

**Host Species:** Mouse

**Clonality:** Mouse Monoclonal

**Clone ID:** 1F6-9A9-6A5

**MW:** Calculated MW: 16 kDa; Observed MW: 16 kDa

**Isotype:** IgG1

**Purification:** Affinity Purified

**Species Reactivity:** Human

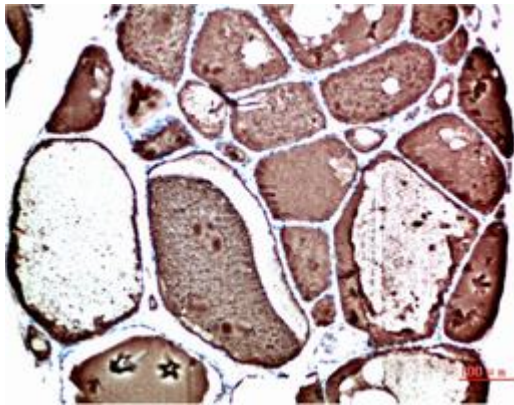
**Conjugation:** Unconjugated

**Modification:** Unmodified

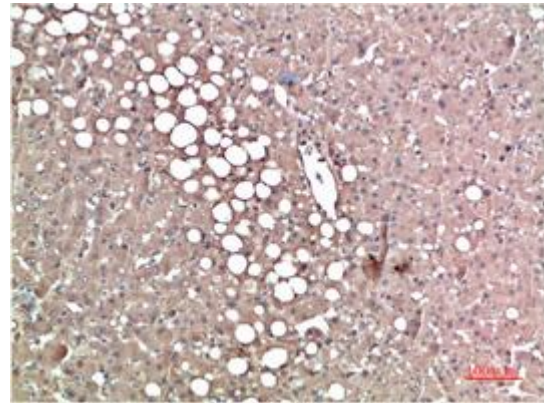
**Constituents:** PBS (without Mg<sup>2+</sup> and Ca<sup>2+</sup>), pH 7.3 containing 50% glycerol, 0.5% BSA and 0.02% sodium azide

**Research Areas:** Neuroscience

**Storage & Shipping:** Store at -20°C. Avoid repeated freezing and thawing



Immunohistochemical analysis of paraffin-embedded Human tonsils using Prealbumin (1F6) antibody. High-pressure and temperature Sodium Citrate pH 6.0 was used for antigen retrieval.



Immunohistochemistry analysis of paraffin-embedded Human Liver Carcinoma Tissue using Prealbumin (1F6) antibody. High-pressure and temperature Sodium Citrate pH 6.0 was used for antigen retrieval.



Western blot analysis of Prealbumin (1F6) in Hela, Jurkat, mouse brain, MOLT4, Human serum lysates using Prealbumin (1F6) antibody