

## PREP RABBIT PAB

**Cat.#:** N225057

**Product Name:** Anti-PREP Rabbit pAb

**Synonyms:** PREP; PEP; Prolyl endopeptidase; PE; Post-proline cleaving enzyme

**UNIPROT ID:** P48147

**Background:** The protein encoded by this gene is a cytosolic prolyl endopeptidase that cleaves peptide bonds on the C-terminal side of prolyl residues within peptides that are up to approximately 30 amino acids long. Prolyl endopeptidases have been reported to be involved in the maturation and degradation of peptide hormones and neuropeptides.

**Immunogen:** Synthesized peptide derived from PREP . at AA range: 10-90

**Applications:** WB,IHC-P,ELISA

**Recommended Dilutions:** WB: 1/500-1/1000 IHC: 1/50-1/100 ELISA: 1/10000

**Host Species:** Rabbit

**Clonality:** Rabbit Polyclonal

**Clone ID:** -

**MW:** Calculated MW: 81 kDa; Observed MW: 81 kDa

**Isotype:** IgG

**Purification:** Affinity Purified

**Species Reactivity:** Human,Mouse,Rat

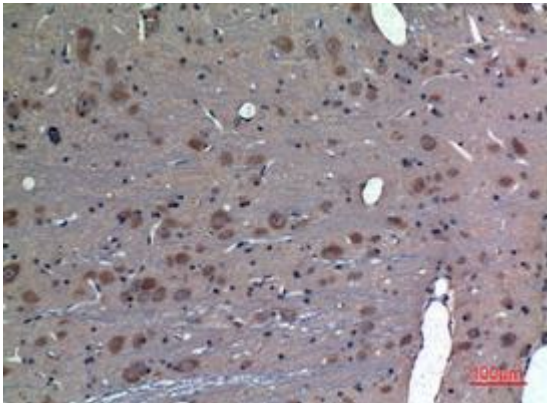
**Conjugation:** Unconjugated

**Modification:** Unmodified

**Constituents:** PBS (without Mg<sup>2+</sup> and Ca<sup>2+</sup>), pH 7.3 containing 50% glycerol, 0.5% BSA and 0.02% sodium azide

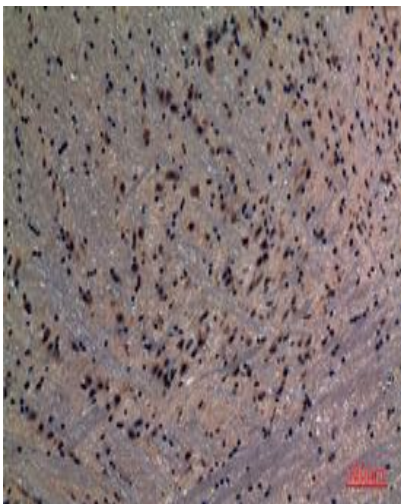
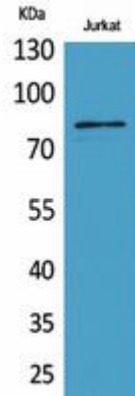
**Research Areas:** -

**Storage & Shipping:** Store at -20°C. Avoid repeated freezing and thawing



Immunohistochemistry analysis of paraffin-embedded rat brain

using PREP antibody. High-pressure and temperature Sodium Citrate pH 6.0 was used for antigen retrieval.



Immunohistochemistry analysis of paraffin-embedded mouse brain using PREP antibody. High-pressure and temperature Sodium Citrate pH 6.0 was used for antigen retrieval.