

## PRESENILIN 2 RABBIT MAB

**Cat.#:** N261566

**Product Name:** Anti-Presenilin 2 Rabbit Monoclonal Antibody

**Synonyms:** AD3LP; AD5; E5-1; STM-2

**UNIPROT ID:** P49810

**Background:** Probable catalytic subunit of the gamma-secretase complex, an endoprotease complex that catalyzes the intramembrane cleavage of integral membrane proteins such as Notch receptors and APP (amyloid-beta precursor protein).

**Immunogen:** A synthetic peptide of human Presenilin 2

**Applications:** WB,IP

**Recommended Dilutions:** WB: 1/500-1/1000 IP: 1/20

**Host Species:** Rabbit

**Clonality:** Rabbit Monoclonal

**Clone ID:** R02-5B8

**MW:** Calculated MW: 50 kDa; Observed MW: 23 kDa

**Isotype:** IgG

**Purification:** Affinity Purified

**Species Reactivity:** Human,Mouse,Rat

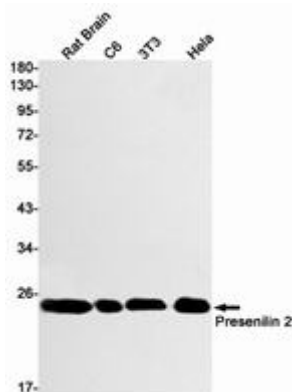
**Conjugation:** Unconjugated

**Modification:** Unmodified

**Constituents:** PBS (without Mg<sup>2+</sup> and Ca<sup>2+</sup>), pH 7.3 containing 50% glycerol, 0.5% BSA and 0.02% sodium azide

**Research Areas:** Neuroscience Alzheimer's disease

**Storage & Shipping:** Store at -20°C. Avoid repeated freezing and thawing



Western blot analysis of Presenilin 2 in rat Brain, C6, 3T3, HeLa lysates using Presenilin 2 antibody.



# Product Description

Pioneering GTPase and Oncogene Product Development since 2010

---