

PRKACB RABBIT PAB

Cat.#: S217695

Product Name: Anti-PRKACB Rabbit Polyclonal Antibody

Synonyms: PKACB; PKA C-beta

UNIPROT ID: P22694 (Gene Accession - BC016285)

Background: The protein encoded by this gene is a member of the serine/threonine protein kinase family. The encoded protein is a catalytic subunit of cAMP (cyclic AMP)-dependent protein kinase, which mediates signalling through cAMP. cAMP signaling is important to a number of processes, including cell proliferation and differentiation. Multiple alternatively spliced transcript variants encoding distinct isoforms have been observed.

Immunogen: Fusion protein of human PRKACB

Applications: ELISA, IHC

Recommended Dilutions: IHC: 50-200; ELISA: 5000-10000

Host Species: Rabbit

Clonality: Rabbit Polyclonal

Isotype: Immunogen-specific rabbit IgG

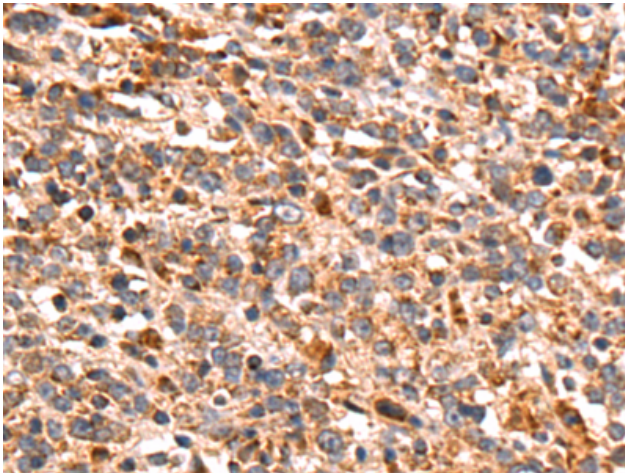
Purification: Antigen affinity purification

Species Reactivity: Human, Mouse, Rat

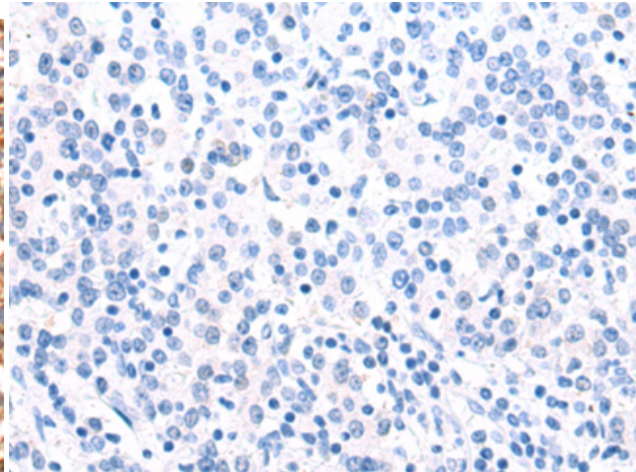
Constituents: PBS (without Mg²⁺ and Ca²⁺), pH 7.4, 150 mM NaCl, 0.05% Sodium Azide and 40% glycerol

Research Areas: Signal Transduction, Cancer, Metabolism

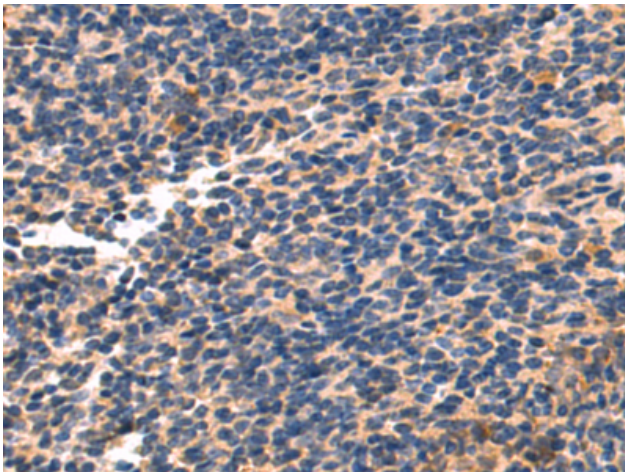
Storage & Shipping: Store at -20°C. Avoid repeated freezing and thawing



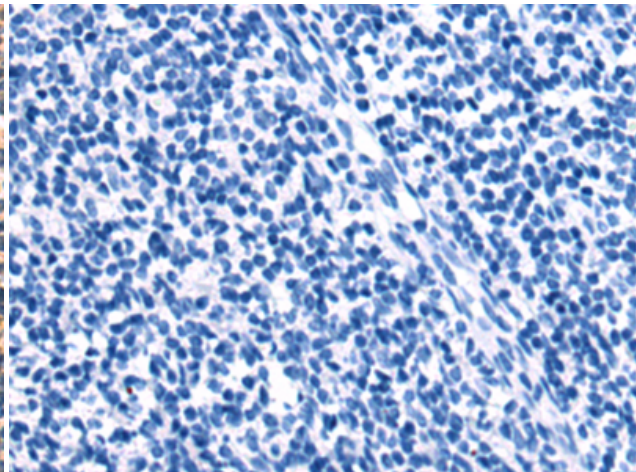
Immunohistochemistry analysis of paraffin embedded Human gastric cancer tissue using 217695 (PRKACB Antibody) at a dilution of 1/85 (Cytoplasm).



In comparison with the IHC on the left, the same paraffin-embedded Human gastric cancer tissue is first treated with the fusion protein and then with 217695 (Anti-PRKACB Antibody) at dilution 1/85.



The image on the left is immunohistochemistry of paraffin-embedded Human tonsil tissue using 217695 (Anti-PRKACB Antibody) at a dilution of 1/85.



In comparison with the IHC on the left, the same paraffin-embedded Human tonsil tissue is first treated with fusion protein and then with D222879 (Anti-PRKACB Antibody) at dilution 1/85.