

PRKACG RABBIT PAB

Cat.#: S216732

Product Name: Anti-PRKACG Rabbit Polyclonal Antibody

Synonyms: KAPG; PKACg

UNIPROT ID: P22612 (Gene Accession - BC039888)

Background: cAMP-dependent protein kinase catalytic subunit gamma is an enzyme that in humans is encoded by the PRKACG gene. Cyclic AMP-dependent protein kinase (PKA) consists of two catalytic subunits and a regulatory subunit dimer. This gene encodes the gamma form of its catalytic subunit. The gene is intronless and is thought to be a retrotransposon derived from the gene for the alpha form of the PKA catalytic subunit. PRKACG has been shown to interact with Ryanodine receptor 2.

Immunogen: Fusion protein of human PRKACG

Applications: ELISA, IHC

Recommended Dilutions: IHC: 25-100; ELISA: 2000-5000

Host Species: Rabbit

Clonality: Rabbit Polyclonal

Isotype: Immunogen-specific rabbit IgG

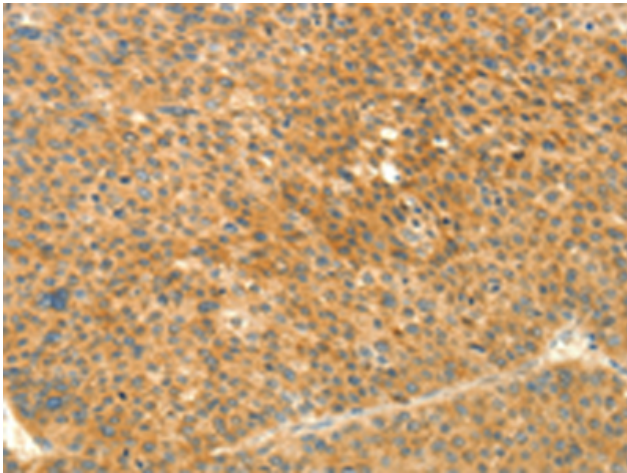
Purification: Antigen affinity purification

Species Reactivity: Human

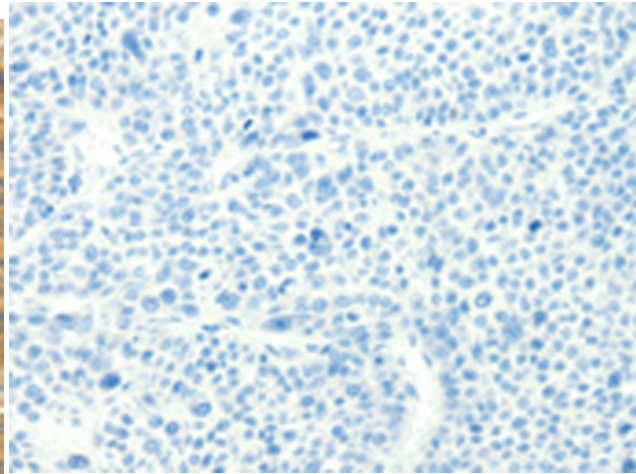
Constituents: PBS (without Mg²⁺ and Ca²⁺), pH 7.4, 150 mM NaCl, 0.05% Sodium Azide and 40% glycerol

Research Areas: Signal Transduction, Cancer, Metabolism

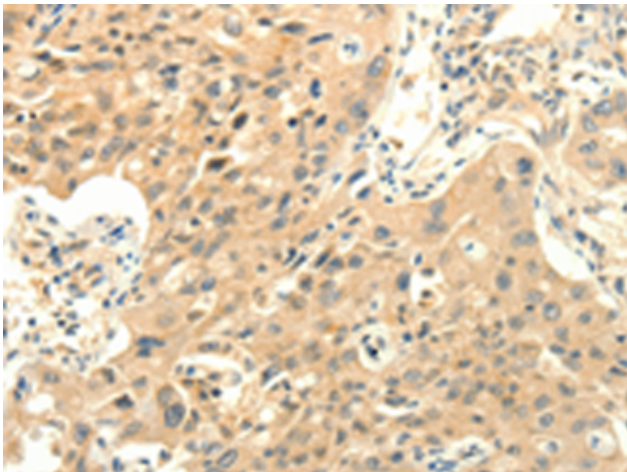
Storage & Shipping: Store at -20°C. Avoid repeated freezing and thawing



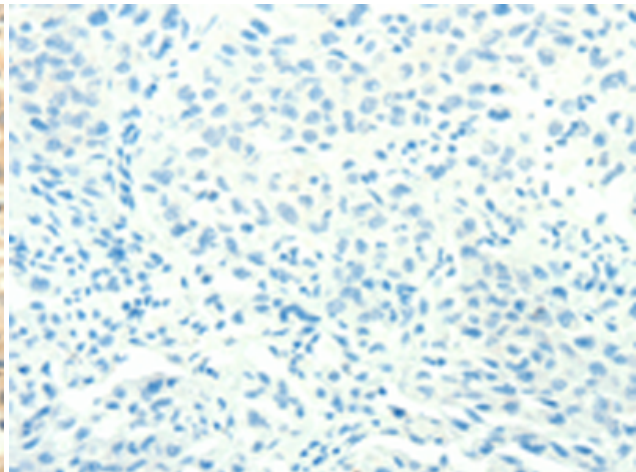
Immunohistochemistry analysis of paraffin embedded Human lung cancer tissue using 216732(PRKACG Antibody) at a dilution of 1/25(Cytoplasm).



In comparison with the IHC on the left, the same paraffin-embedded Human lung cancer tissue is first treated with the fusion protein and then with 216732(Anti-PRKACG Antibody) at dilution 1/25.



The image on the left is immunohistochemistry of paraffin-embedded Human liver cancer tissue using 216732(Anti-PRKACG Antibody) at a dilution of 1/25.



In comparison with the IHC on the left, the same paraffin-embedded Human liver cancer tissue is first treated with fusion protein and then with D221137(Anti-PRKACG Antibody) at dilution 1/25.