

PRKD1 RABBIT PAB

Cat.#: S220174

Product Name: Anti-PRKD1 Rabbit Polyclonal Antibody

Synonyms: PKD, PKCM, PRKCM, PKC-MU

UNIPROT ID: Q15139 (Gene Accession - NP_002733)

Background: PRKD1 is a serine/threonine kinase that regulates a variety of cellular functions, including membrane receptor signaling, transport at the Golgi, protection from oxidative stress at the mitochondria, gene transcription, and regulation of cell shape, motility, and adhesion

Immunogen: Synthetic peptide of human PRKD1

Applications: ELISA, IHC

Recommended Dilutions: IHC: 50-200; ELISA: 2000-10000

Host Species: Rabbit

Clonality: Rabbit Polyclonal

Isotype: Immunogen-specific rabbit IgG

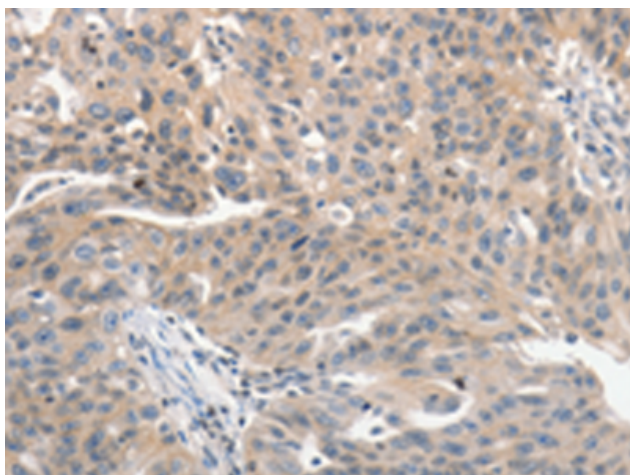
Purification: Antigen affinity purification

Species Reactivity: Human, Mouse, Rat

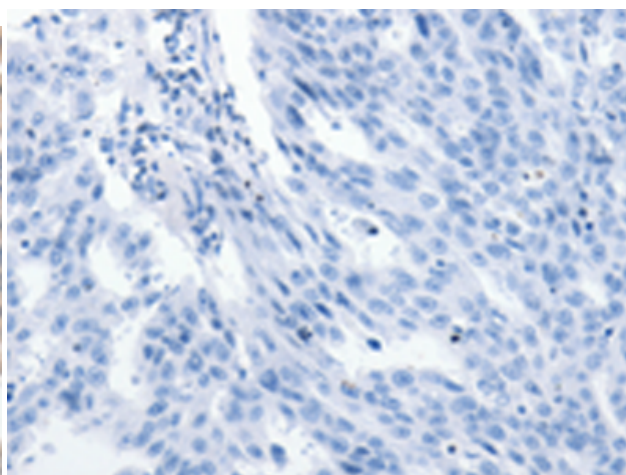
Constituents: PBS (without Mg²⁺ and Ca²⁺), pH 7.4, 150 mM NaCl, 0.05% Sodium Azide and 40% glycerol

Research Areas: Signal Transduction, Cancer, Metabolism

Storage & Shipping: Store at -20°C. Avoid repeated freezing and thawing



Immunohistochemistry analysis of paraffin embedded Human ovarian cancer tissue using 220174 (PRKD1 Antibody) at a dilution of 1/70 (Cytoplasm).



In comparison with the IHC on the left, the same paraffin-embedded Human ovarian cancer tissue is first treated with the synthetic peptide and then with 220174 (Anti-PRKD1 Antibody) at dilution 1/70.