

## PRKG2 RABBIT PAB

**Cat.#:** S220086

**Product Name:** Anti-PRKG2 Rabbit Polyclonal Antibody

**Synonyms:** cGKII; PRKGR2

**UNIPROT ID:** Q13237 (Gene Accession - NP\_006250 )

**Background:** cGKII (cGMP-dependent protein kinase type II) is a major receptor of intracellular cGMP and mediates a plethora of physiological responses. cGKII contains a conserved leucine zipper motif at the amino-terminus. It is expressed in small intestine, colon, prostate, and human brain tissues, and the cGKII gene maps to chromosome 4q13.1-q21.1. cGKII has been shown to regulate the ion transport system in the intestine. Myristoylation of the penultimate glycine in cGKII appears to be essential for directing cGKII to the membrane, since cGKII is devoid of any hydrophobic transmembrane domains. The translocation of cGKII from the cytosol to the membrane allows it to function properly in regulating intestinal ion transport.

**Immunogen:** Synthetic peptide of human PRKG2

**Applications:** ELISA, WB, IHC

**Recommended Dilutions:** IHC: 25-100;WB: 200-1000;ELISA: 2000-5000

**Host Species:** Rabbit

**Clonality:** Rabbit Polyclonal

**Isotype:** Immunogen-specific rabbit IgG

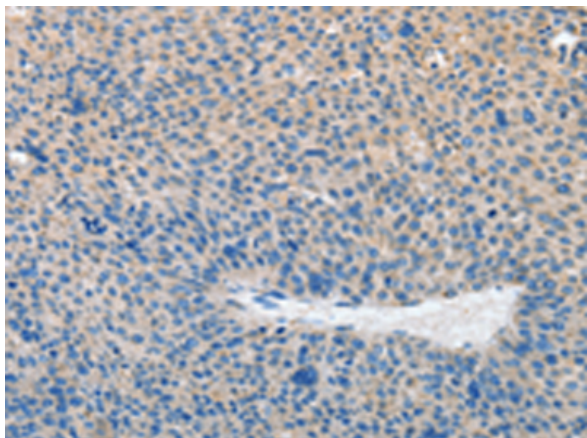
**Purification:** Antigen affinity purification

**Species Reactivity:** Human, Mouse, Rat

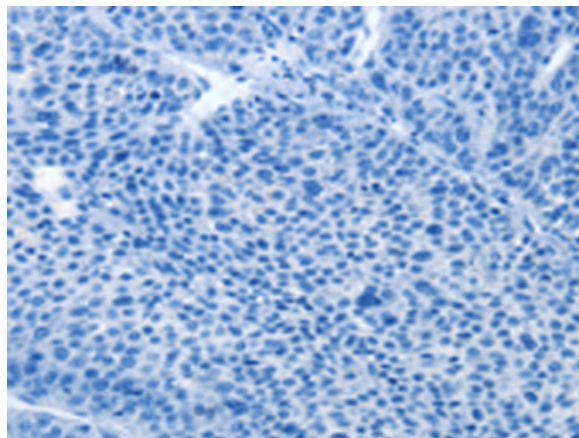
**Constituents:** PBS (without Mg<sup>2+</sup> and Ca<sup>2+</sup>), pH 7.4, 150 mM NaCl, 0.05% Sodium Azide and 40% glycerol

**Research Areas:** Signal Transduction

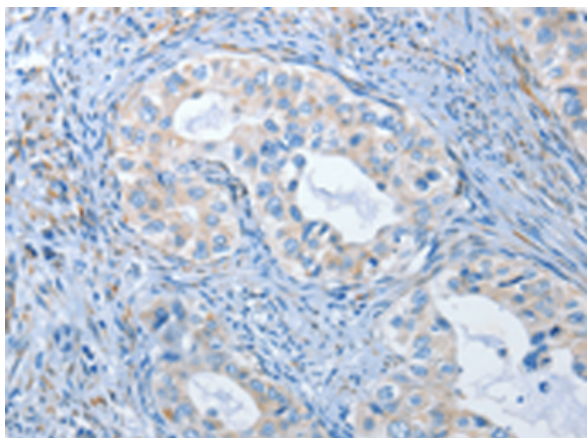
**Storage & Shipping:** Store at -20°C. Avoid repeated freezing and thawing



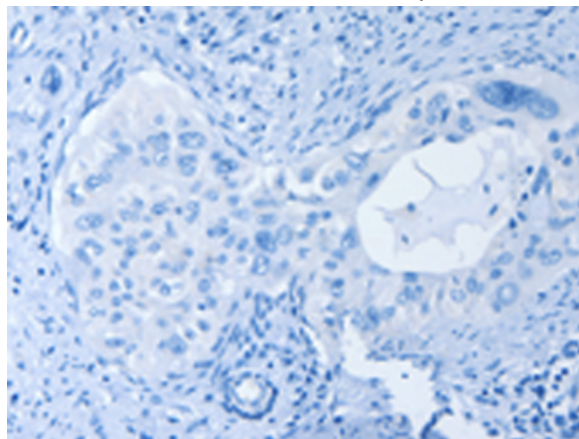
Immunohistochemistry analysis of paraffin embedded Human liver cancer tissue using 220086 (PRKG2 Antibody) at a dilution of 1/20 (Cytoplasm).



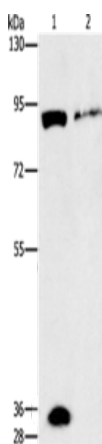
In comparison with the IHC on the left, the same paraffin-embedded Human liver cancer tissue is first treated with the synthetic peptide and then with 220086 (Anti-PRKG2 Antibody) at dilution 1/20.



The image on the left is immunohistochemistry of paraffin-embedded Human cervical cancer tissue using 220086 (Anti-PRKG2 Antibody) at a dilution of 1/20.



In comparison with the IHC on the left, the same paraffin-embedded Human cervical cancer tissue is first treated with synthetic peptide and then with D260929 (Anti-PRKG2 Antibody) at dilution 1/20.



Gel: 8% SDS-PAGE, Lysate: 50 µg;  
Lane 1-2: Mouse brain tissue, Mouse lung tissue;  
Primary antibody: 220086 (PRKG2 Antibody) at dilution 1/160;  
Secondary antibody: Goat anti rabbit IgG at 1/8000 dilution;  
Exposure time: 30 seconds



# Product Description

Pioneering GTPase and Oncogene Product Development since 2010

---