

PRLHR RABBIT PAB

Cat.#: S222099

Product Name: Anti-PRLHR Rabbit Polyclonal Antibody

Synonyms: GR3; GPR10; PrRPR

UNIPROT ID: P49683 (Gene Accession - NP_004239)

Background: PRLHR is a 7-transmembrane domain receptor for prolactin-releasing hormone (PRLH; MIM 602663) that is highly expressed in anterior pituitary (Ozawa et al., 2002 [PubMed 11923475]).

Immunogen: Synthetic peptide of human PRLHR

Applications: ELISA, IHC

Recommended Dilutions: IHC: 50-300; ELISA: 5000-10000

Host Species: Rabbit

Clonality: Rabbit Polyclonal

Isotype: Immunogen-specific rabbit IgG

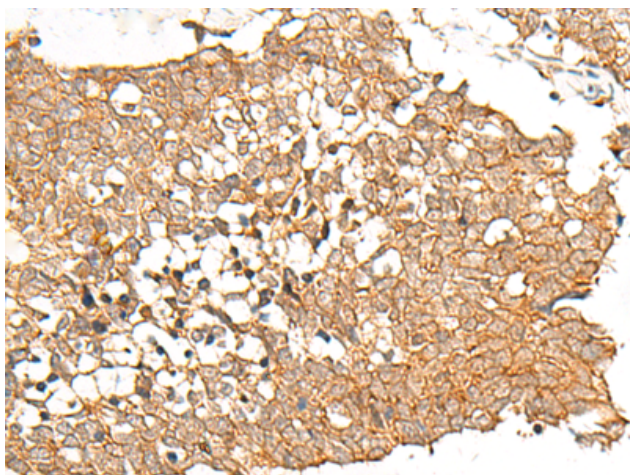
Purification: Antigen affinity purification

Species Reactivity: Human

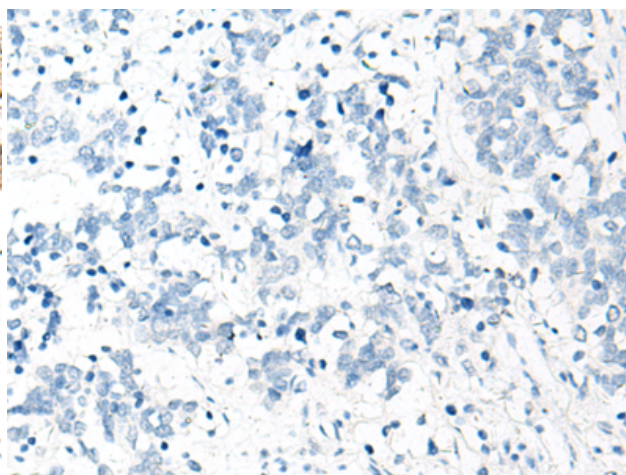
Constituents: PBS (without Mg²⁺ and Ca²⁺), pH 7.4, 150 mM NaCl, 0.05% Sodium Azide and 40% glycerol

Research Areas: Signal Transduction, Neuroscience

Storage & Shipping: Store at -20°C. Avoid repeated freezing and thawing



Immunohistochemistry analysis of paraffin embedded Human lung cancer tissue using 222099(PRLHR Antibody) at a dilution of 1/70(Cell membrane).



In comparison with the IHC on the left, the same paraffin-embedded Human lung cancer tissue is first treated with the synthetic peptide and then with 222099(Anti-PRLHR Antibody) at dilution 1/70.