

PROFILIN 1 RABBIT PAB

Cat.#: N225820

Product Name: Anti-Profilin 1 Rabbit pAb

Synonyms: Epididymis tissue protein Li 184a; Profilin I

UNIPROT ID: P07737

Background: Binds to actin and affects the structure of the cytoskeleton. At high concentrations, profilin prevents the polymerization of actin, whereas it enhances it at low concentrations. By binding to PIP₂, it inhibits the formation of IP₃ and DG.

Immunogen: A synthesized peptide derived from human Profilin1

Applications: WB,IHC-P,ICC/IF,IP,FC

Recommended Dilutions: WB: 1/500-1/1000 IHC: 1/50-1/100 IF: 1/50-1/200 IP: 1/20 FC: 1/50-1/100

Host Species: Rabbit

Clonality: Rabbit Polyclonal

Clone ID: -

MW: Calculated MW: 15 kDa; Observed MW: 15 kDa

Isotype: IgG

Purification: Affinity Chromatography

Species Reactivity: Human,Mouse,Rat

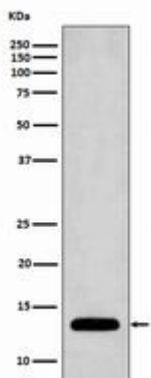
Conjugation: Unconjugated

Modification: Unmodified

Constituents: PBS (without Mg²⁺ and Ca²⁺), pH 7.3 containing 50% glycerol, 0.5% BSA and 0.02% sodium azide

Research Areas: Tags & Cell Markers

Storage & Shipping: Store at -20°C. Avoid repeated freezing and thawing



Western blot analysis of Profilin1 in Jurkat lysates using Profilin 1 antibody.



Product Description

Pioneering GTPase and Oncogene Product Development since 2010
