

PROHIBITIN RABBIT MAB

Cat.#: N263508

Product Name: Anti-Prohibitin Rabbit Monoclonal Antibody

Synonyms: PHBI; HEL-215; HEL-S-54e

UNIPROT ID: P35232

Background: PHBI is 30kDa tumor suppressor protein involved in cell cycle control. PHBI has been found in mitochondria, the nucleus and the plasma membrane, as well as extracellularly in circulation. In mitochondria prohibitins mainly exist as membrane-bound ring complexes and function as chaperones maintaining mitochondrial protein stability during protein synthesis and transportation.

Immunogen: A synthetic peptide of human Prohibitin

Applications: WB,IHC-F,IHC-P,ICC/IF,IP

Recommended Dilutions: WB: 1/500-1/1000 IHC: 1/50-1/100 IF: 1/50-1/200 IP: 1/20

Host Species: Rabbit

Clonality: Rabbit Monoclonal

Clone ID: R07-2G1

MW: Calculated MW: 30 kDa; Observed MW: 30 kDa

Isotype: IgG

Purification: Affinity Purified

Species Reactivity: Human,Rat

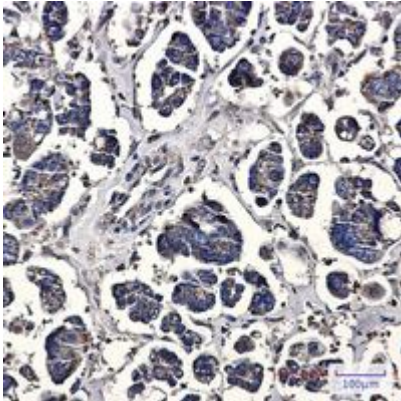
Conjugation: Unconjugated

Modification: Unmodified

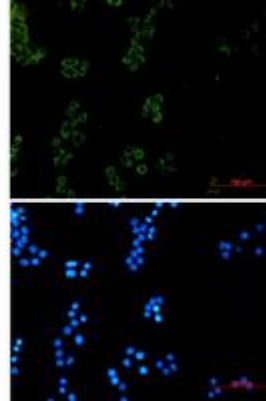
Constituents: PBS (without Mg²⁺ and Ca²⁺), pH 7.3 containing 50% glycerol, 0.5% BSA and 0.02% sodium azide

Research Areas: Cell Biology

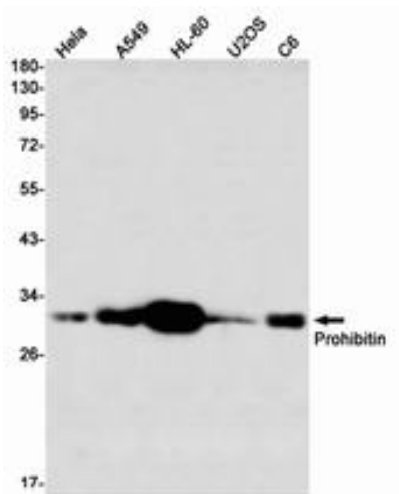
Storage & Shipping: Store at -20°C. Avoid repeated freezing and thawing



Immunohistochemistry analysis of paraffin-embedded Human Cholangiocarcinoma using Prohibitin antibody. High-pressure and temperature Sodium Citrate pH 6.0 was used for antigen retrieval.



Immunocytochemistry analysis of Prohibitin (green) in Hela using Prohibitin antibody, and DAPI (blue).



Western blot analysis of Prohibitin in Hela, A549, HL-60, U2OS, C6 lysates using Prohibitin antibody.