

## PROKR2 RABBIT PAB

**Cat.#:** S219831

**Product Name:** Anti-PROKR2 Rabbit Polyclonal Antibody

**Synonyms:** HH3; KAL3; PKR2; GPRg2; GPR73b; GPR73L1; dJ680N4.3

**UNIPROT ID:** Q8NFJ6 (Gene Accession - NP\_658986 )

**Background:** Prokineticins are secreted proteins that can promote angiogenesis and induce strong gastrointestinal smooth muscle contraction. The protein encoded by this gene is an integral membrane protein and G protein-coupled receptor for prokineticins. The encoded protein is similar in sequence to GPR73, another G protein-coupled receptor for prokineticins.

**Immunogen:** Synthetic peptide of human PROKR2

**Applications:** ELISA, WB, IHC

**Recommended Dilutions:** IHC: 50-100;WB: 500-2000;ELISA: 5000-10000

**Host Species:** Rabbit

**Clonality:** Rabbit Polyclonal

**Isotype:** Immunogen-specific rabbit IgG

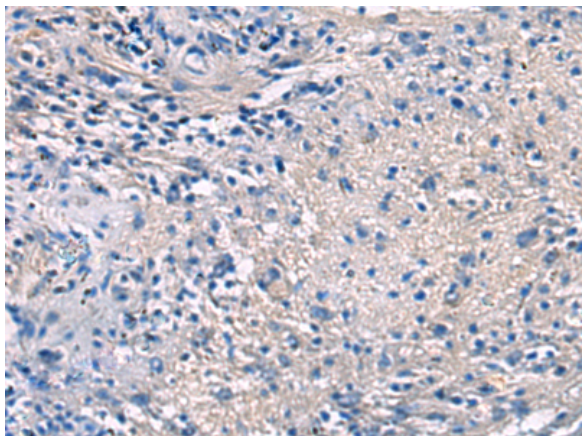
**Purification:** Antigen affinity purification

**Species Reactivity:** Human, Mouse

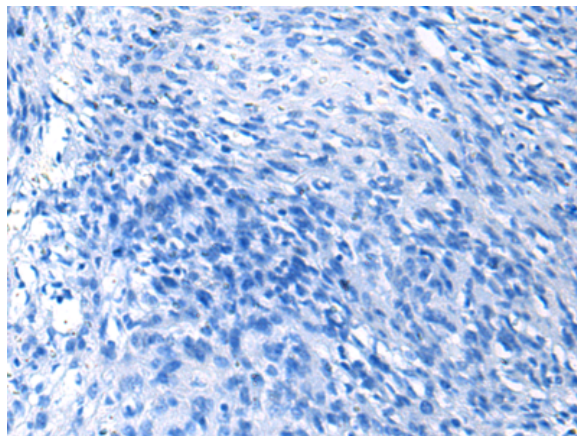
**Constituents:** PBS (without Mg<sup>2+</sup> and Ca<sup>2+</sup>), pH 7.4, 150 mM NaCl, 0.05% Sodium Azide and 40% glycerol

**Research Areas:** Signal Transduction, Neuroscience

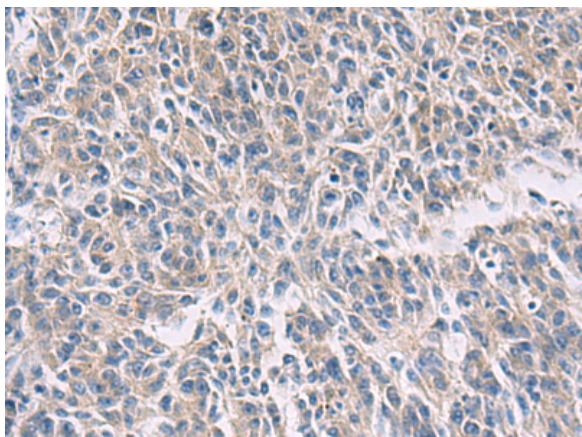
**Storage & Shipping:** Store at -20°C. Avoid repeated freezing and thawing



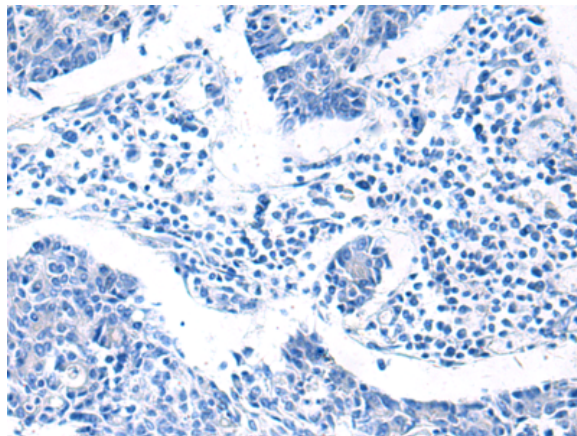
Immunohistochemistry analysis of paraffin embedded Human brain tissue using 219831(PROKR2 Antibody) at a dilution of 1/40(Cytoplasm).



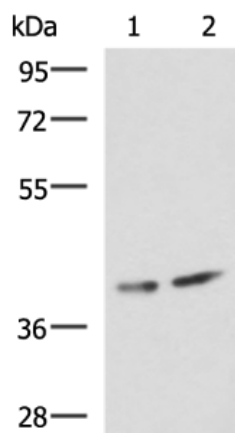
In comparison with the IHC on the left, the same paraffin-embedded Human brain tissue is first treated with the synthetic peptide and then with 219831(Anti-PROKR2 Antibody) at dilution 1/40.



The image on the left is immunohistochemistry of paraffin-embedded Human colorectal cancer tissue using 219831(Anti-PROKR2 Antibody) at a dilution of 1/40.



In comparison with the IHC on the left, the same paraffin-embedded Human colorectal cancer tissue is first treated with synthetic peptide and then with D260451(Anti-PROKR2 Antibody) at dilution 1/40.



Gel: 8%SDS-PAGE, Lysate: 40 µg;  
 Lane 1-2: Human cerebrum tissue and Mouse brain tissue lysates;  
 Primary antibody: 219831(PROKR2 Antibody) at dilution 1/800;  
 Secondary antibody: HRP-conjugated Goat anti rabbit IgG at 1/5000 dilution;  
 Exposure time: 1 minute



# Product Description

Pioneering GTPase and Oncogene Product Development since 2010

---