

PROSTAGLANDIN D SYNTHASE RABBIT MAB

Cat.#: N262763

Product Name: Anti-Prostaglandin D Synthase Rabbit Monoclonal Antibody

Synonyms: PDS; PGD2; PGDS; LPGDS; PGDS2; L-PGDS

UNIPROT ID: P41222

Background: Catalyzes the conversion of PGH₂ to PGD₂, a prostaglandin involved in smooth muscle contraction/relaxation and a potent inhibitor of platelet aggregation. Involved in a variety of CNS functions, such as sedation, NREM sleep and PGE₂-induced allodynia, and may have an anti-apoptotic role in oligodendrocytes. Binds small non-substrate lipophilic molecules, including biliverdin, bilirubin, retinal, retinoic acid and thyroid hormone, and may act as a scavenger for harmful hydrophobic molecules and as a secretory retinoid and thyroid hormone transporter. Possibly involved in development and maintenance of the blood-brain, blood-retina, blood-aqueous humor and blood-Tis barrier. It is likely to play important roles in both maturation and maintenance of the central nervous system and male reproductive system.

Immunogen: A synthetic peptide of human Prostaglandin D Synthase

Applications: WB,IHC-F,IHC-P,ICC/IF

Recommended Dilutions: WB: 1/500-1/1000 IHC: 1/50-1/100 IF: 1/50-1/200

Host Species: Rabbit

Clonality: Rabbit Monoclonal

Clone ID: R06-1C5

MW: Calculated MW: 21 kDa; Observed MW: 26 kDa

Isotype: IgG

Purification: Affinity Purified

Species Reactivity: Human,Mouse,Rat

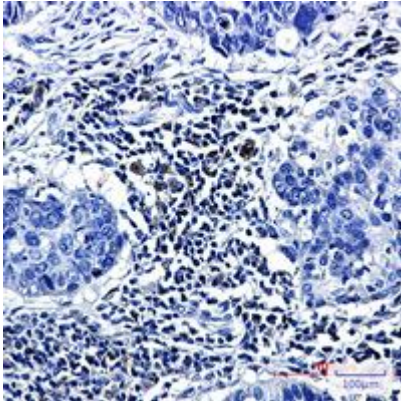
Conjugation: Unconjugated

Modification: Unmodified

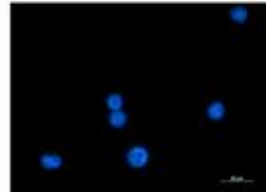
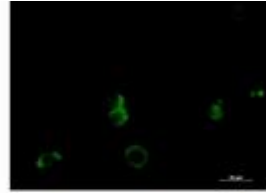
Constituents: PBS (without Mg²⁺ and Ca²⁺), pH 7.3 containing 50% glycerol, 0.5% BSA and 0.02% sodium azide

Research Areas: Signal Transduction

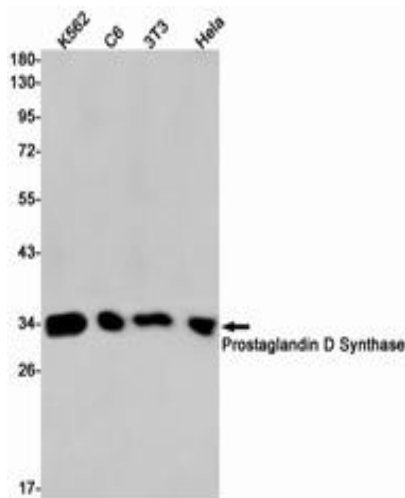
Storage & Shipping: Store at -20°C. Avoid repeated freezing and thawing



Immunohistochemistry analysis of paraffin-embedded Human lung cancer tissue using Prostaglandin D Synthase antibody. High-pressure and temperature Sodium Citrate pH 6.0 was used for antigen retrieval.



Immunocytochemistry analysis of Prostaglandin D Synthase (green) in K562 using Prostaglandin D Synthase antibody, and DAPI (blue).



Western blot analysis of Prostaglandin D Synthase in K562, C6, 3T3, HeLa lysates using Prostaglandin D Synthase antibody.