

PROSTATE SECRETORY PROTEIN RABBIT PAB

Cat.#: N225982

Product Name: Anti-Prostate Secretory Protein Rabbit pAb

Synonyms: MSP; PSP; IGBF; MSPB; PN44; PRPS; HPC13; PSP57; PSP94; PSP-94

UNIPROT ID: P08118

Background: Specific receptors for this protein are found on spermatozoa and in the prostate.

Immunogen: A synthesized peptide derived from human Prostate Secretory Protein/PSP

Applications: WB,IHC-P,IP

Recommended Dilutions: WB: 1/500-1/1000 IHC: 1/50-1/100 IP: 1/20

Host Species: Rabbit

Clonality: Rabbit Polyclonal

Clone ID: -

MW: Calculated MW: 13 kDa; Observed MW: 13 kDa

Isotype: IgG

Purification: Affinity Chromatography

Species Reactivity: Human

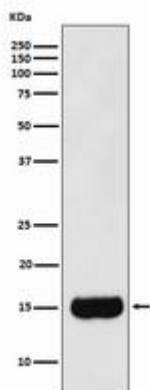
Conjugation: Unconjugated

Modification: Unmodified

Constituents: PBS (without Mg²⁺ and Ca²⁺), pH 7.3 containing 50% glycerol, 0.5% BSA and 0.02% sodium azide

Research Areas: Tags & Cell Markers

Storage & Shipping: Store at -20°C. Avoid repeated freezing and thawing



Western blot analysis of Prostate Secretory Protein/PSP in Human prostate cancer lysates using Prostate Secretory Protein antibody.



Product Description

Pioneering GTPase and Oncogene Product Development since 2010
