

PROSTATE SPECIFIC ANTIGEN RABBIT PAB

Cat.#: N225074

Product Name: Anti-Prostate Specific Antigen Rabbit pAb

Synonyms: KLK3; APS; Prostate-specific antigen; PSA; Gamma-seminoprotein; Semin; Kallikrein-3; P-30 antigen; Semenogelase

UNIPROT ID: P07288

Background: PSA/KLK3 is a member of the glandular kallikrein subfamily of serine proteases. Upon cleavage of 7 amino-terminal amino acids, it is activated to liquefy semen in the seminal coagulum. Although PSA/KLK3 is produced in healthy individuals, investigators have found abnormally high levels in the blood of men with advanced prostate cancer.

Immunogen: The antiserum was produced against synthesized peptide derived from the Internal region of human KLK3. AA range:131-180

Applications: WB,IHC-P,ELISA

Recommended Dilutions: WB: 1/500-1/1000 IHC: 1/50-1/100 ELISA: 1/10000

Host Species: Rabbit

Clonality: Rabbit Polyclonal

Clone ID: -

MW: Calculated MW: 29 kDa; Observed MW: 29 kDa

Isotype: IgG

Purification: Affinity Purified

Species Reactivity: Human

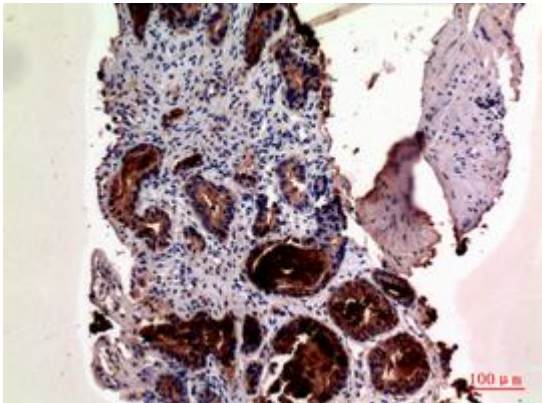
Conjugation: Unconjugated

Modification: Unmodified

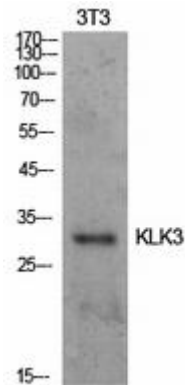
Constituents: PBS (without Mg²⁺ and Ca²⁺), pH 7.3 containing 50% glycerol, 0.5% BSA and 0.02% sodium azide

Research Areas: Neuroscience

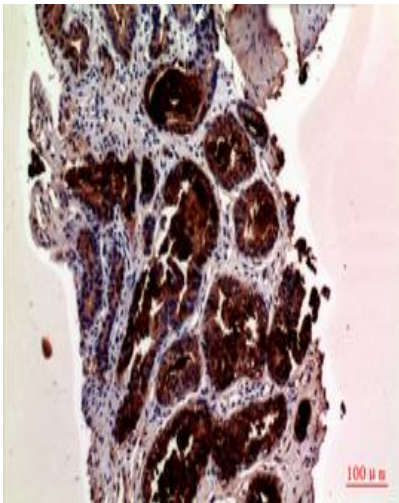
Storage & Shipping: Store at -20°C. Avoid repeated freezing and thawing



Immunohistochemistry analysis of paraffin-embedded Human prostate cancer using Prostate Specific Antigen antibody. High-pressure and temperature Sodium Citrate pH 6.0 was used for antigen retrieval.



Western blot analysis of Prostate Specific Antigen in NIH3T3 lysates using Prostate Specific Antigen antibody.



Immunohistochemistry analysis of paraffin-embedded Human prostate cancer using Prostate Specific Antigen antibody. High-pressure and temperature Sodium Citrate pH 6.0 was used for antigen retrieval.