

PROTEASOME ALPHA 6 RABBIT MAB

Cat.#: N262767

Product Name: Anti-Proteasome alpha 6 Rabbit Monoclonal Antibody

Synonyms: proteasome subunit alpha 6; IOTA; p27K; PROS27

UNIPROT ID: P60900

Background: The proteasome is a multicatalytic proteinase complex with a highly ordered ring-shaped 20S core structure. The core structure is composed of 4 rings of 28 non-identical subunits; 2 rings are composed of 7 alpha subunits and 2 rings are composed of 7 beta subunits. Proteasomes are distributed throughout eukaryotic cells at a high concentration and cleave peptides in an ATP/ubiquitin-dependent process in a non-lysosomal pathway. An essential function of a modified proteasome, the immunoproteasome, is the processing of class I MHC peptides. This gene encodes a member of the peptidase T1A family, that is a 20S core alpha subunit. Multiple transcript variants encoding several different isoforms have been found for this gene. A pseudogene has been identified on the Y chromosome. [provided by RefSeq, Aug 2013]

Immunogen: A synthetic peptide of human Proteasome subunit alpha type 6

Applications: WB, ICC/IF

Recommended Dilutions: WB: 1/500-1/1000 IF: 1/50-1/200

Host Species: Rabbit

Clonality: Rabbit Monoclonal

Clone ID: R01-4I2

MW: Calculated MW: 27 kDa; Observed MW: 27 kDa

Isotype: IgG

Purification: Affinity Purified

Species Reactivity: Human, Mouse, Rat

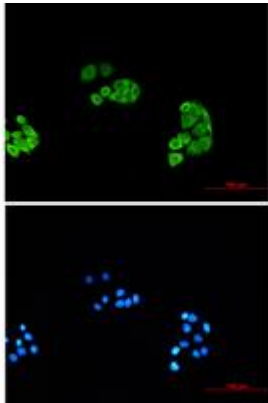
Conjugation: Unconjugated

Modification: Unmodified

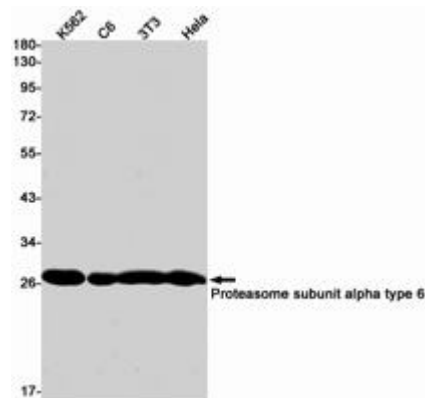
Constituents: PBS (without Mg²⁺ and Ca²⁺), pH 7.3 containing 50% glycerol, 0.5% BSA and 0.02% sodium azide

Research Areas: Cell Biology

Storage & Shipping: Store at -20°C. Avoid repeated freezing and thawing



Immunocytochemistry analysis of Proteasome subunit alpha type 6 (green) in HeLa using Proteasome subunit alpha type 6 antibody, and DAPI (blue)



Western blot analysis of Proteasome subunit alpha type 6 in K562, C6, 3T3, HeLa lysates using Proteasome alpha 6 antibody.